



Engine	Cummins X12
Rated Power	298 kW (400 hp/405 ps) @ 2,100 rpm
Net Power	282 kW (378 hp/383 ps) @ 2,100 rpm
Maximum Digging Depth	7,380 mm (24'3")
Standard Bucket Capacity	2.2 m ³ (2.9 yd ³)
Operating Weight	50,000 kg (110,231 lbs)

952E DM
EXCAVATOR

952E^{DM} SPECIFICATIONS >>>

PERFORMANCE PARAMETERS

Operating Weight	50,000 kg
Std. Bucket Heaped Capacity (Referenced)	2.2 m ³ (2.9 yd ³)
Maximum Travel Speed	5.3 km/h (3.4 mph)
Swing Speed	8.5 rpm
Drawbar Pull	386 kN (86,776 lbf)
Bucket Digging Force (ISO)	310 kN (69,691 lbf)
Arm Digging Force (ISO)	287 kN (64,520 lbf)

ENGINE

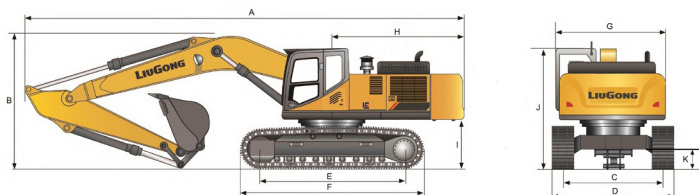
Emission Regulation	Tier 4F / Stage V
Maker	Cummins
Model	X12
Rated Power	298 kW (400 hp / 405 ps) @ 2,100 rpm
Net Power	282 kW (378 hp / 383 ps) @ 2,100 rpm
Peak Torque	2,034 N·m (1,500 lbf·ft) @ 1,400 rpm
Number of Cylinders	6
Displacement	11.8 L (3.1 gal)

UNDERCARRIAGE

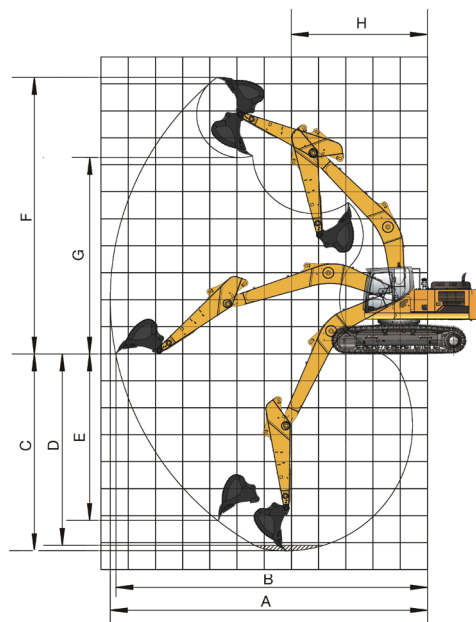
Shoe Width	600 mm
Number of Shoes per Side	50
Number of Bottom Rollers per Side	9
Number of Upper Rollers per Side	2

DIMENSIONS

A Shipping Length	12,030 mm
B Shipping Height	3,810 mm
C Track Gauge	2,740 mm
D Undercarriage Width	3,440 mm
E Length to Center of Rollers	4,475 mm
F Track Length	5,500 mm
G Overall Width of Upper Structure	3,110 mm
H Tail Swing Radius	3,640 mm
I Counterweight Ground Clearance	1,324 mm
J Overall Height of Cab	3,307 mm
K Min. Ground Clearance	532 mm



Unit: mm



WORKING RANGE

Boom Length	7,060 mm (23'2")
Arm Length	2,900 mm (9'6")
A Max. Digging Reach	11,585 mm (38')
B Max. Digging Reach on Ground	11,368 mm (37')
C Max. Digging Depth	7,380 mm (24'3")
D Max. Digging Depth, 2.44 m (8') level	7,218 mm (23'8")
E Max. Vertical Wall Digging Depth	6,011 mm (19'9")
F Max. Cutting Height	10,618 mm (34'10")
G Max. Dumping Height	7,578 mm (24'10")
H Min. Front Swing Radius	5,052 mm (16'7")

HYDRAULIC SYSTEM

Main Pumps Total Flow	760 L/min (200.8 gal/min)
Relief Pressure, main	34.3 MPa (4,975 psi)
Relief Pressure, boost	37.2 MPa (5,395 psi)

SERVICE CAPACITIES

Fuel Tank	650 L (171.7 gal)
Engine Oil	34 L (9 gal)
Cooling System	33 L (8.7 gal)
Hydraulic Reservoir	290 L (76.6 gal)
Hydraulic System Total	520 L (137.4 gal)

Guangxi Liugong Machinery Co., Ltd.

No. 1 Liutai Road, Liuzhou, Guangxi 545007, PR China
T: +86 772 3886124 E: overseas@liugong.com
www.liugong.com

12/2020 Designed by Liugong

Specifications and designs are subject to change without notice. Machines shown may include optional equipment. Liugong standard and optional equipment may vary from region to region. Please consult your Liugong dealer for information specific to your area. Engine power kW is converted to horsepower (1 kW=1.3596 ps and 1 kW=1.3410 hp) in this file.