



Engine	Cummins QSB7
Rated Power	169 kW (227 hp / 230 ps) @ 2,050 rpm
Net Power	156 kW (209 hp / 212 ps) @ 1,900 rpm
Maximum Dig Depth	7,300 mm
Standard Bucket Capacity	1.6 m ³
Operating Weight	31,800-32,900 kg

933E EXCAVATOR



TOUGH WORLD. TOUGH EQUIPMENT.

You don't need to be told it's a tough world. It's your reality, you live it every day and you know how hard it can be on your people and your machines. It's getting tougher to make your business pay too, with rising costs, increasing legislation and greater competition. We understand and we've put that understanding into action with our new 933E.

933E. NO TOUGH COMPROMISES, JUST EVERYTHING YOU NEED AND NOTHING YOU DON'T

The construction equipment industry has seen an expensive trend towards over-engineered products. Some manufacturers genuinely believe that adding cost, adds perceived value in customers' eyes.

BUT YOU TOLD US A DIFFERENT STORY

You asked for a tough, well-engineered excavator, which can do the job. Any job.



YOU WANTED A LARGE-SIZED EXCAVATOR THAT DELIVERS ON 3 ESSENTIAL NEEDS;

1



FIT FOR PURPOSE

2



UPTIME AND SUPPORT

3



TOTAL COST OF OWNERSHIP



With the 933E, we've met your challenge and given you everything you want – without compromise.

TOUGH FACTS

AWARD WINNING DESIGN

Our UK-based design team has invested thousands of man hours to really understand how our machines are used every day. This insight shapes our innovative approach to product design. Our design team recently won a prestigious Red Dot Award for our D-Series Grader and our New F-Series shares this award-winning design DNA.

TOUGH RESEARCH AND TESTING

Finding tougher, smarter, safer and more cost-effective ways of working matters to you. It matters to us too. Our new Global Research & Development Centre is a great example of this customer focused approach. We've established an international team of industry experts, backed up with the latest world-class technology, all focused on delivering greater value to you.

TOUGH QUALITY STANDARDS

When it comes to quality, we let our actions to speak for themselves. We follow a rigorous Six Sigma methodology and consistently achieve ISO 9001 standards.

FIT FOR PURPOSE

Firstly, you need to know that your machine is up to the job; breaking, digging, lifting, working hard – anytime – anywhere. Excavators have got to be tough and they've got to perform.

OUR NEW 933E HIGH PERFORMANCE FROM THE GROUND UP

- 1 TOUGHER UNDERCARRIAGE**
 With X-shaped frame built from high strength tensile steel, the 933E's undercarriage is designed to withstand the toughest conditions. Continuous digging, lifting and loading can put excessive stress on machines. The 933E has a long track beam and crawler system that guarantees greater stability. The structure also helps protect key components such as the travel motor from undue stress.
- 2 TOUGHER COMPONENTS**
 The undercarriage components are tougher too. Heavy duty rollers, reinforced idler frame and optional full track guard guarantee the integrity of our undercarriage. It's this core strength that enables our customers to keep working and earning – around the clock.
- 3 TOUGHER UPPER STRUCTURE**
 The upper structure of the 933E is built around a reinforced and well-engineered H-beam, allowing the boom to be mounted exactly in the center of the machine. This central positioning helps the boom cope with more stress on the attachment group. It also means better distribution of weight and tension along the entire machine.
- 4 TOUGHER BOOM AND ARM**
 The 933E features a tougher, reinforced heavy duty boom and arm built from high-strength tensile steel, with castings and forgings in high stress areas for heavy-duty performance and maximum uptime. We also use over-sized pins to allow the 933E, not just to work harder, but to work harder for longer. Our confidence in our machines is underlined by one of the most comprehensive warranties in the industry.
- 5 MAXIMUM COMFORT**
 Our cab gives the extreme large space to work. Increased spacing in the cab provides the operator more room of foot and hand operations for maximum comfort.



6 SIMPLY MULTIFUNCTIONAL
 Switching attachments like buckets, breakers and shears can be time consuming and hazardous. We've made it fast, safe and simple with LiuGong's quick coupler and powerlatch tilt coupler. These are perfectly matched to a range of genuine LiuGong attachments including; buckets and breakers which can be changed from the seat of the cab in less than a minute, quick, safe and easy.

7 SIMPLER TO DO THE JOB RIGHT
 Six selectable work modes equip even the newest operator with the skills of an expert, allowing them to perfectly match machine performance with the job, whatever that job may be.



8 FASTER CYCLE TIMES
 Greater hydraulic flow and higher swing speeds combine to improve cycle times by 12% on tasks such as truck loading, digging, trenching and backfilling compared with our previous model.

JOBSITE FACT: ANYTIME

10,000 hours registered and still working hard.
 Tapegyseg Co. Hungary
 "We use our LiuGong excavator for breaking down large stone and concrete sections. In two years we have not had a problem and our machines are working 10-11 hours a day, six days a week."

JOBSITE FACT: ANYWHERE!

-49°C
 Temperatures drop but the work rate stays high.
 LiuGong Excavators played a key part in supporting China's Polar Exploration team. Extreme temperatures, high altitudes, strong winds and intense ultraviolet light made the Antarctic an extremely tough test environment.

TOUGH JUDGES

Operators are tough judges. They know what they like and what they don't. We've talked, we've listened and we've delivered a no-nonsense excavator that will do everything the operator wants and needs it to do. Job done? Judge for yourself.

TOUGH EQUIPMENT
100,000 Excavators currently in the field.
 Over **1/2 BILLION** productive hours worked.



POWER TO GET THE TOUGHEST JOBS DONE RIGHT

Fit for purpose is about giving your operators efficient and intelligent power when they need it, with control and precision. That's what we do.

POWER WITHOUT COMPROMISE.

The 933E is powered by the latest Cummins QSB7 engine with a rated net power of 156 kW (209 hp / 212 ps) @ 1,900 rpm in compliance with EU Stage IIIA emission standards.

The compact QSB7 delivers unmatched and dependable power in its class yet it produces virtually zero emissions.

The engine utilizes turbo charger and air-to-air intercooler along with mechanically controlled direct injection to optimize machine performance. It's powerful. It's responsive. It tackles the toughest jobs without being thirsty for fuel, but above all, it's a joy to operate.



INTELLIGENT POWER CONTROL

The 933E's advanced Intelligent Power Control (IPC) system intelligently delivers the power you need – when you need it.

This new generation computer-aided IPC system allows the 933E's mechanical, electrical and hydraulic systems to work together in perfect harmony and helps even novice operators get more from the machine. An improved pump system delivers efficient oil output under lower engine speeds, resulting in fuel efficiency and reduced noise levels.

ADVANCED HYDRAULIC SYSTEM

LiuGong's advanced hydraulic system, regenerates oil in the cylinders more efficiently reducing heat, increasing fuel efficiency and improving cycle times.

The hydraulic system is highly effective in delivering power and precise control to where the operator really needs it, making even the toughest job simple.



SMART FUEL ECONOMY

The intelligent combination of powerful digging force, swing torque and lifting performance make the most of every drop of fuel. The 945E/950E maximizes fuel economy by intelligently regulating its idle speed by the second.



1 second: If no hydraulic request signal detected from the joystick, the engine speed is automatically dropped by 100 rpm.



3 seconds: If no activity is detected over three seconds the engine speed will decrease to idle.

In each case, as soon as the system detects the hydraulic signal once more, the engine will immediately return to the previous throttle speed setting.

DAILY CHECKS AND MAINTENANCE SHOULDN'T BE TOUGH

Simple daily checks and maintenance prolong machine performance but, they can be difficult and time consuming on tough jobsites where time is precious. **Not with the 933E.**

PRACTICAL SERVICING

Smart and effective design makes service and maintenance fast and simple – that's good news for operators who work in some of the toughest places on the planet.

Handrails are fitted as standard, enabling safe and easy access to the upper structure for easy engine service and maintenance.

ON BOARD MONITORING

With onboard monitoring, the operator can check the machine's vital signs without leaving his seat. Using the LCD display, the operator can easily check oil temperatures and pressure levels, receive service interval alerts and access other information that contributes to simple maintenance and servicing of the machine.



EASILY ACCESSIBLE SERVICE POINTS MAKE DAILY CHECKS FAST AND EFFECTIVE

- Easily visible hydraulic oil level gauge
- Accessible, grouped filters
- Easy to replace A/C filter next to the cab door
- Maintenance free air filter



DESIGNED TO MAKE TOUGH WORK EASY ON THE OPERATOR

Climb into the cab of the 933E and you can see that it has been designed by someone who has operated a machine in really tough conditions.

For a start, it's safe and easy to get in and out of.

Trips and slips account for the majority of accidents onsite. Well-placed door handles, safety rails and anti-slip tape on the upper part of the machine make it easier and safer for operators to enter and exit the cab in all weathers and conditions.

Inside, the cab is secure and protected with space to work and excellent 360 degree views of the site.

The controls are where the operator needs them to be. They are easy to see, easy to reach and easy to handle.

The multi-adjustable air-suspension seats are comfortable and designed to keep the operator fresh and alert.

The cab is sound proofed, vibration protected and well ventilated. It has advanced climate control to handle the changing seasons and is completely sealed to prevent dust contamination.



WE PUT OPERATORS FIRST

It makes good business sense to give operators the very best working environment – a comfortable operator is a productive operator. The 933E keeps operators safer, more alert and more productive.

Smart additions such as; rear view camera, heated seats, refrigerator or personal belonging compartment and an iPod/AUX connection combine to create the best environment – for the best operators.



ADVANCED CLIMATE CONTROL

An advanced climate control system creates the right environment in any weather.

LARGE LCD MONITOR

The easy-to-read, full-color LCD monitor displays all the critical information your operator needs, including working mode, hydraulic oil temperature, hydraulic pressure and service intervals.





JOBSITE UPTIME AND SUPPORT

Fit for purpose might convince you to buy your first machine, but it's uptime and support and total cost of ownership which will keep you coming back to buy more machines. Having confidence in the machine's back up and support network is a vital part of the purchasing decision. How do we at LiuGong measure up?

FAST RESPONDING GLOBAL NETWORK

We have an extensive dealer network of over 300 dealers in more than 100 countries.

All supported by 13 regional subsidiaries and 12 regional parts depots offering expert training, parts and service support.



WHERE YOU NEED US WHEN YOU NEED US

Reliability is built into our machines but all machines have some planned downtime. Our aim is to reduce even planned down time to the minimum by getting it right. Technician training and parts availability are also high on our agenda, as is keeping you

informed on service and maintenance work and providing clear and accurate estimates, invoices and communication. These may be small things, but customer feedback tells us that these basics really matter – so we aim to get them right.

MAINTENANCE AND SUPPORT PACKAGES

From genuine LiuGong parts, to full repair and maintenance contracts, LiuGong has the flexibility to offer the level of support and response to suit your business and applications. Whatever level of support you choose you can be confident that it is backed up by LiuGong's service promise.

**Right parts.
Right price.
Right service.**

**Above all,
we get it right
the first time.**



WE ARE LIUGONG. WORKING HARD TO KEEP OUR GLOBAL CUSTOMERS EARNING

9,500+
Employees

20
Factories

13
Regional subsidiaries

300+
Dealers

1,000+
R&D engineers

5
R&D facilities

12
Regional parts depots

Over
60 Years' experience

LIUGONG SERVICE PROMISE

Highly trained technicians utilizing the latest diagnostic equipment

15,000+ Genuine LiuGong parts available within 24hrs from our European Parts Distribution Center

Multi-lingual Service helpline and online support

Transparent estimates and invoicing

Clear communications through electronic parts catalogue



TOTAL COST OF OWNERSHIP

Fit for purpose and uptime and support are two key excavator purchasing criteria but ultimately, the machines earning potential, its overall life cost and its trade-in value really matter too.

When it comes to total cost of ownership LiuGong has a strong story to tell.

PROFESSIONAL ADVICE

We are committed to reducing your total cost of ownership and increasing your profits. As part of this, LiuGong's experts will provide targeted advice on everything, from choosing the right machine for your needs to maximizing its efficiency on site.

MACHINE AVAILABILITY

Our machines deliver everything you need and nothing you don't. They are expertly engineered NOT over engineered. As a result of having an extensive manufacturing operation right in the heart of Europe, we can offer significantly shorter lead times on

a range of models, compared with some manufacturers. In fact, we can deliver selected machines in as little as 4 weeks. The faster you can get a machine – the faster you can get working and earning. Our aim is to get you on to the jobsite fast.

TICKET PRICE

At LiuGong, our aim is to provide you with real, measurable value by giving you everything you need and nothing you don't. We choose high quality, proven components and parts from world-renowned brands and suppliers. These proven components, combined with LiuGong design and manufacturing quality, result in a high quality, competitive machine that is totally fit for purpose.

RESIDUAL VALUE

With the combination of LiuGong design and manufacturing excellence, world class components and comprehensive uptime support, our quality holds its value.



IT ALL ADDS UP

With the 933E we've risen to the challenge and given you everything you need and nothing you don't.

It's an excavator which can handle any job, anywhere, backed up by LiuGong's service promise and designed to perform on the jobsite and on the balance sheet. Add up the benefits and you'll see that 933E represents the formula for success.



FIT FOR PURPOSE

+

UPTIME AND SUPPORT

+

TOTAL COST OF OWNERSHIP

CUSTOMER SATISFACTION

SPECIFICATIONS

OPERATING WEIGHT 31,800-32,900 kg

Operating weight includes coolant, lubricants, full fuel tank, cab, standard shoes, boom, arm, bucket and operator 75 kg.

Bucket capacity 1.6 m³

ENGINE

Description

Cummins EPA Tier 3 / EU Stage IIIA, inline 6-cylinder, turbocharger, high pressure common rail, electronically controlled direct injection. Air cleaner: Cummins direct flow air filter. Cooling system: Charge-air cooler (CAC)

Emission rating EPA Tier 3 / EU Stage IIIA

Engine manufacturer Cummins

Engine model QSB7

Aspiration Wastegate Turbo (WGT)

Charged air cooling Aftercooler

Cooling fan drive Direct

Displacement 6.7 L

Rated speed 2,050 rpm

Engine output - net (SAE J1349 / ISO 9249) 156 kW (209 hp / 212 ps)

Engine output - rated (SAE J1995 / ISO 14396) 169 kW (227 hp / 230 ps)

Maximum torque 895 N-m @ 1,300 rpm

Bore x Stroke 107 x 124 mm

UNDERCARRIAGE

Track shoe each side 48

Link pitch 216 mm

Shoe width, triple grouser 600/700/800/900 mm

Bottom rollers each side 9

Top rollers each side 2

SWING SYSTEM

Description

Planetary gear reduction driven by high torque axial piston motor, with oil disk brake. Swing parking brake resets within five seconds after swing pilot controls return to neutral.

Swing speed 10.3 rpm

Swing torque 105,000 N-m

HYDRAULIC SYSTEM

Main pump

Type Two variable displacement piston pumps

Maximum flow 2 x 266 L/min

Pilot pump

Type Gear pump

Maximum flow 19 L/min

Relief valve setting

Implement 34.3/37.3 MPa

Travel circuit 34.3 MPa

Slew circuit 26.2 MPa

Pilot circuit 3.9 MPa

Hydraulic cylinders

Boom Cylinder – Bore x Stroke $\Phi 140 \times 1,342$ mm

Arm Cylinder – Bore x Stroke $\Phi 150 \times 1,755$ mm

Bucket Cylinder – Bore x Stroke $\Phi 140 \times 1,135$ mm

ELECTRIC SYSTEM

System Voltage 24 V

Batteries 2 x 12 V

Alternator 24 V - 70 A

Start motor 24 V - 7.5 kW

SERVICE CAPACITIES

Fuel tank 520 L

Engine oil 26.5 L

Final drive (each) 9.5 L

Swing drive 10.5 L

Cooling system 35 L

Hydraulic reservoir 195 L

Hydraulic system total 360 L

SOUND PERFORMANCE

Interior Sound Power Level (ISO 6396) 74 dBA

Exterior Sound Power Level (ISO 6395) 106 dBA

DRIVE AND BRAKES

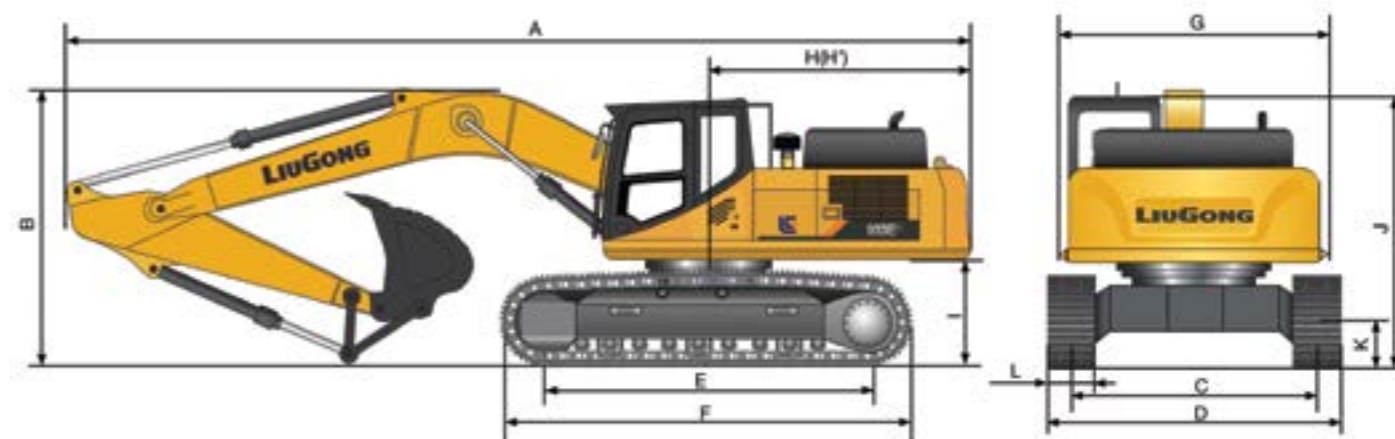
Description

2-speed axial piston motors with oil disk brakes. Steering controlled by two hand levers with pedals.

Max. travel speed High: 5.5 km/h
Low: 3.0 km/h

Gradeability 35°/70%

Max. drawbar pull 300 kN



DIMENSIONS

Boom	6,200 mm	
Arm Options	3,050 mm	2,600 mm
A Shipping Length	10,650 mm	
B Shipping Height – Top of Boom	3,525 mm	
C Track Gauge	2,590 mm	
D Undercarriage Width – with 600 mm Shoes	3,190 mm	
700 mm Shoes	3,290 mm	
800 mm Shoes	3,390 mm	
900 mm Shoes	3,490 mm	
E Length to Center of Rollers	4,050 mm	
F Track Length	4,980 mm	
G Overall Width of Upper Structure	3,163 mm (including protective side beam)	
H Tail Swing Radius	3,300 mm	
I Counterweight Ground Clearance	1,215 mm	
J Overall Height of Cab	3,325 mm (with protective equipment)	
K Min. Ground Clearance	500 mm	
L Track Shoe Width	600 mm	

BOOM DIMENSIONS

Boom	6,200 mm
Length	6,420 mm
Height	1,788 mm
Width	942 mm
Weight	2,740 kg

Cylinder, piping and pin included.
Boom cylinder pin excluded.

ARM DIMENSIONS

Arm	3,050 mm	2,600 mm
Length	4,222 mm	3,800 mm
Height	1,046 mm	1,052 mm
Width	542 mm	542 mm
Weight	1,700 kg	1,650 kg

Cylinder, linkage and pin included.

BUCKET SELECTION GUIDE

Bucket type	Capacity	Cutting width	Weight	Teeth pcs	6,200 mm boom	
					3,050 mm arm	2,600 mm arm
Light Duty Digging Bucket	1.6 m ³	1,605 mm	1,417 kg	5	A,B	NA
General Purpose	1.6 m ³	1,560 mm	1,488 kg	5	C	B

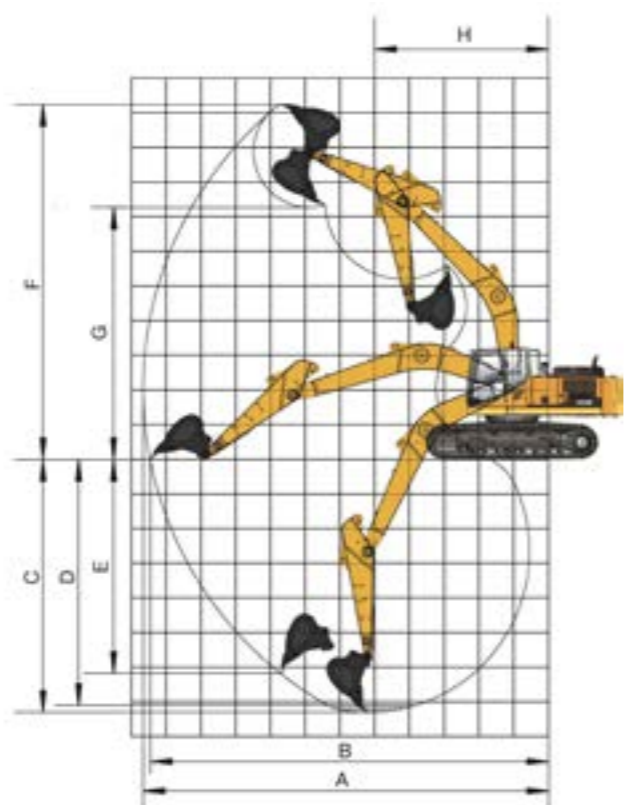
The recommendations are given as a guide only, based on typical operation conditions. Bucket capacity based on ISO 7451, heaped material with a 1:1 angle of repose.

Maximum material density:
 A 1,000 - 1,200 kg/m³: Sand and sandy loam, Humus, Planting soil, Stony loam
 B 1,200 - 1,500 kg/m³: Building soil, Cemented backfill, Ice clay, Natural small gravel
 A,B 1,000-1,500 kg/m³: Refer to A&B description
 C 1,600 - 2,000 kg/m³: Building soil, Cemented backfill, Ice clay
 D 2,000 - 2,200 kg/m³: Gravel, Pebbles
 E 2,200 - 2,500 kg/m³: Coal seam, Shale



MACHINE WEIGHTS AND GROUND PRESSURE

Shoe width	6.2 m boom, 3.05 m arm, 1.6 m ³ bucket, 5,500 kg counterweight			6.2 m boom, 2.6 m arm, 1.6 m ³ bucket, 5,500 kg counterweight		
	Operating weight	Ground pressure	Overall width	Operating weight	Ground pressure	Overall width
600 mm	31,800 kg	60 kPa	3,190 mm	31,850 kg	60 kPa	3,190 mm
700 mm	32,100 kg	51.5 kPa	3,290 mm	32,150 kg	51.6 kPa	3,290 mm
800 mm	32,500 kg	45.6 kPa	3,390 mm	32,550 kg	45.7 kPa	3,390 mm
900 mm	32,900 kg	41 kPa	3,490 mm	32,950 kg	41.1 kPa	3,490 mm



WORKING RANGE

Boom Length	6,200 mm	
Arm Length	3,050 mm	2,600 mm
A. Max. Digging Reach	10,653 mm	10,250 mm
B. Max. Digging Reach on Ground	10,453 mm	10,032 mm
C. Max. Digging Depth	7,300 mm	6,825 mm
D. Max. Digging Depth, 2.44 m (8') level	7,096 mm	6,590 mm
E. Max. Vertical Wall Digging Depth	6,216 mm	5,460 mm
F. Max. Cutting Height	10,300 mm	10,007 mm
G. Max. Dumping Height	7,265 mm	7,086 mm
H. Min. Front Swing Radius	4,040 mm	4,040 mm
Bucket Digging Force (ISO)	Normal	187 kN
	Power Boost	203 kN
Arm Digging Force (ISO)	Normal	137 kN
	Power Boost	149 kN
Bucket Capacity	1.4 m ³	1.6 m ³
Bucket Tip Radius	1,606 mm	1,606 mm

Lifting capacity at the arm end without bucket. For lifting capacity including bucket, weight of the bucket or the bucket with quick coupler must be deducted from the lifting capacities. Lifting capacities are based on the machine standing on a firm, uniform supporting surface.



Rating over - front (Cf) Rating over - side (Cs)

- Do not attempt to lift or hold any load that is greater than these rated values at their specified load radius and height. Weight of all accessories must be deducted from the above lifting capacities.
- The rated loads are in compliance with ISO 10567 Hydraulic Excavator Lift Capacity Rating Standard. They do not exceed 87% of hydraulic lifting capacity or 75% tipping load.
- Ratings at bucket lift hook.

- Lifting capacities are based on machine standing on level, firm and uniform ground.
- *Indicates the load is limited by hydraulic capacity rather than tipping capacity.
- Operator should be fully acquainted with the Operator's and Maintenance Instructions before operating this machine and rules for the safe operation of equipment should be adhered to at all times.

LIFTING CAPACITY (METRIC)

933E with 600 mm shoes, 3,050 mm arm

Conditions

A: Load radius
B: Load point height
C: Lifting capacity rating
Cf: Rating loads over front
Cs: Rating loads over side

Boom length: 6,200 mm
Arm length: 3,050 mm
Bucket: None
Counterweight: 5,500 kg
Shoes: 600 mm triple grouser
Unit: kg



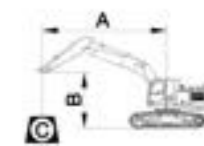
B (m)	A (Unit: m)												MAX REACH		
	3.0		4.5		6.0		7.5		9.0						
	Cf	Cs	Cf	Cs	Cf	Cs	Cf	Cs	Cf	Cs	Cf	Cs			
7.5													*6,270	*6,270	7.2
6.0					*6,360	*6,360	*6,220	*6,220					*6,290	6,180	8.1
4.5			*8,750	*8,750	*7,300	*7,300	*6,610	*6,610					*6,420	5,510	8.7
3.0			*11,350	*11,350	*8,530	*8,530	*7,230	6,650	*6,610	5,170	*6,610	5,170	*6,610	5,170	9.0
1.5			*13,410	12,720	*9,670	8,660	*7,860	6,480	*6,860	5,100	*6,860	5,100	*6,860	5,100	9.0
GROUND LEVEL			*14,310	12,450	*10,420	8,460	*8,310	6,360			*7,130	5,210			8.8
- 1.5	*20,490	*20,490	*14,270	12,420	*10,630	8,390	*8,400	6,320			*7,460	5,600			8.3
- 3.0	*18,760	*18,760	*13,430	12,550	*10,150	8,450	*7,750	6,410			*7,750	6,410			7.5
- 4.5	*15,670	*15,670	*11,470	*11,470	*8,420	*8,420					*8,000	*8,000			6.2

933E with 700 mm shoes, 3,050 mm arm

Conditions

A: Load radius
B: Load point height
C: Lifting capacity rating
Cf: Rating loads over front
Cs: Rating loads over side

Boom length: 6,200 mm
Arm length: 3,050 mm
Bucket: None
Shoes: 700 mm triple grouser
Unit: kg



B (m)	A (Unit: m)												MAX REACH		
	3.0		4.5		6.0		7.5		9.0						
	Cf	Cs	Cf	Cs	Cf	Cs	Cf	Cs	Cf	Cs	Cf	Cs			
7.5													*6,270	*6,270	7.2
6.0					*6,360	*6,360	*6,220	*6,220					*6,290	6,270	8.1
4.5			*8,750	*8,750	*7,300	*7,300	*6,610	*6,610					*6,420	5,580	8.7
3.0			*11,350	*11,350	*8,530	*8,530	*7,230	6,740	*6,610	5,250	*6,610	5,250	*6,610	5,250	9.0
1.5			*13,410	12,890	*9,670	8,780	*7,860	6,570	*6,860	5,170	*6,860	5,180	*6,860	5,180	9.0
GROUND LEVEL			*14,310	12,630	*10,420	8,580	*8,310	6,450			*7,130	5,280			8.8
- 1.5	*20,490	*20,490	*14,270	12,600	*10,630	8,510	*8,400	6,410			*7,460	5,680			8.3
- 3.0	*18,760	*18,760	*13,430	12,720	*10,150	8,570	*7,750	6,500			*7,750	6,500			7.5
- 4.5	*15,670	*15,670	*11,470	*11,470	*8,420	*8,420					*8,000	*8,000			6.2



933E with 600 mm, 2,600 mm arm

A: Load radius
B: Load point height
C: Lifting capacity rating
Cf: Rating loads over front
Cs: Rating loads over side

Conditions

Boom length: 6,200 mm
Arm length: 2,600 mm
Bucket: None
Counterweight: 5,500 kg
Shoes: 600 mm triple grouser
Unit: kg



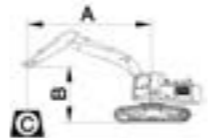
B (m)	A (Unit: m)										
	3.0		4.5		6.0		7.5		MAX REACH		A (m)
	Cf	Cs	Cf	Cs	Cf	Cs	Cf	Cs	Cf	Cs	
7.5					*6,620	*6,620			*6,760	*6,760	6.6
6.0					*6,920	*6,920	*6,740	*6,740	*6,760	*6,760	7.6
4.5			*9,600	*9,600	*7,820	*7,820	*7,020	6,810	*6,880	5,990	8.2
3.0			*12,140	*12,140	*8,970	8,930	*7,570	6,640	*7,050	5,520	8.6
1.5			*13,890	12,580	*10,000	8,630	*8,110	6,490	*7,300	5,450	8.6
GROUND LEVEL			*14,400	12,420	*10,590	8,460	*8,460	6,390	*7,650	5,570	8.4
- 1.5	*19,230	*19,230	*14,080	12,460	*10,610	8,430	*8,370	6,390	*7,970	6,110	7.8
- 3.0	*17,490	*17,490	*12,960	12,640	*9,880	8,540			*8,330	7,200	6.9
- 4.5	*14,040	*14,040	*10,530	*10,530					*8,430	*8,430	5.5

933E with 700 mm shoes, 2,600 mm arm

A: Load radius
B: Load point height
C: Lifting capacity rating
Cf: Rating loads over front
Cs: Rating loads over side

Conditions

Boom length: 6,200 mm
Arm length: 2,600 mm
Bucket: None
Shoes: 700 mm triple grouser
Unit: kg



B (m)	A (Unit: m)										
	3.0		4.5		6.0		7.5		MAX REACH		A (m)
	Cf	Cs	Cf	Cs	Cf	Cs	Cf	Cs	Cf	Cs	
7.5					*6,620	*6,620			*6,760	*6,760	6.6
6.0					*6,920	*6,920	*6,740	*6,740	*6,760	*6,760	7.6
4.5			*9,600	*9,600	*7,820	*7,820	*7,020	6,900	*6,880	6,070	8.2
3.0			*12,140	*12,140	*8,970	*8,970	*7,570	6,730	*7,050	5,600	8.6
1.5			*13,890	12,760	*10,000	8,750	*8,110	6,580	*7,300	5,520	8.6
GROUND LEVEL			*14,400	12,590	*10,590	8,580	*8,460	6,480	*7,560	5,650	8.4
- 1.5	*19,230	*19,230	*14,080	12,630	*10,610	8,550	*8,370	6,480	*7,970	6,190	7.8
- 3.0	*17,490	*17,490	*12,960	12,810	*9,880	8,660			*8,330	7,300	6.9
- 4.5	*14,040	*14,040	*10,530	10,530					*8,430	*8,430	5.5

STANDARD EQUIPMENT

ENGINE SYSTEM

- Cummins QSB7 engine, EPA Tier 3/EU Stage IIIA, turbocharged, 6 cylinder, 4 stroke, water cooled.
- Air filter with pre-cleaner
- Pre-filter with water separator
- Auto-idle speed control
- Aspiration, Wastegate Turbo (WGT)
- IPC (Intelligent Power Control) System
- Radiator, oil cooler, and Charge Air Cooling - After cooler, cooling fan drive - direct drive
- Engine overheat prevention system
- Engine oil filter

DRIVETRAIN

- Hydraulic motor, one-piece two-gear piston and reducer
- 2-speed travel system with automatic shift

SWING SYSTEM

- High-torque piston swing motor with integral spring set and automatic hydraulic release swing brake

HYDRAULIC SYSTEM

- Main pump: two variable displacement piston pumps, ready for PTO
- Pilot pump: gear
- Cylinders: boom, arm, bucket
- Power boost function
- Swing with anti-reverse function

- Boom and arm regeneration circuits
- Pilot oil filter
- Pilot control shut-off lever
- 6-working mode selection system: Power Mode, Economy Mode, Fine Mode, Lifting Mode, Breaker Mode, Attachment Mode

DIGGING EQUIPMENT

- 6,200 mm boom
- 3,050 mm arm
- 1.4 m³ (SAE, heaped) bucket

OPERATOR STATION

- Pressurized and sealed cab with all-around visibility, large roof window with slide sliding sun visor, front window wiper and removable lower window
- Air conditioner, heater, defroster
- Mechanical suspension seat
- AM/FM radio with MP3 audio jack
- Glass-breaking hammer
- Cigarette lighter
- Cup holder
- Floor mat
- Storage box
- Fire extinguisher
- Rear view mirrors
- One key for all locks

INSTRUMENTATION

- Color LCD monitor with alarms, filter/fluid change, fuel rate, water temperature, work mode, fault code, working hour, etc.
- Fuel gauge
- Hydraulic oil level gauge

ELECTRICAL

- Alternator 70 A
- Dual batteries 12 V
- Working lights, 1 frame mounted, 2 boom mounted
- Starting, 24 V

UNDERCARRIAGE

- 600 mm track-shoes with triple grousers
- Rollers, bottom - 9 each side, top - 2 each side
- 2 piece track-guards (each side)
- Towing eye on base frame

GUARDS

- Belly guards, 2 mm
- Cover plate under travel frame

OTHER STANDARD EQUIPMENT

- 5,500 kg counterweight
- Maintenance tool kit
- Maintenance parts package

OPTIONAL EQUIPMENT

ENGINE SYSTEM

- Electrical fuel refilling pump

HYDRAULIC SYSTEM

- Hydraulic attachments rotation lines
- Over loading warning
- Hose burst safety valves, prevention of boom or arm supply dropped when the lines split.
- Dual way auxiliary lines
- Quick coupler lines (low and high pressure)

OPERATOR STATION

- Operation protection guard (included cab front and top guard, bar)
- Operation protection screen (on cab front, net)
- Operation protection screen (front-lower)
- Roll-Over Protective System (ROPS)
- Rain visor
- Mechanic heated suspension seat
- Air suspension seat

UPPER STRUCTURE

- Upper frame protection (wire)
- 8 mm thickness platform bottom plate
- Bucket cylinder guard

UNDERCARRIAGE

- 700 mm, 800 mm, 900 mm track-shoes with triple grousers
- 3 piece track-guards (each side)

DIGGING EQUIPMENT

- 2.6 m arm
- 1.6 m³ (SAE, heaped) bucket

ELECTRICAL

- LED working lights on cab, 4 front and 2 rear
- Rear view camera
- Travel alarm
- Rotating beacon



Guangxi LiuGong Machinery Co., Ltd.

No. 1 Liutai Road, Liuzhou, Guangxi 545007, PR China
T: +86 772 388 6124 E: overseas@liugong.com
www.liugong.com

Like and follow us:



LG-PB-933E-T3-WW-20-012022-ENG

The LiuGong series of logos herein, including but not limited to word marks, device marks, letter of alphabet marks and combination marks, as the registered trademarks of Guangxi LiuGong Group Co., Ltd. are used by Guangxi LiuGong Machinery Co., Ltd. with legal permission, and shall not be used without permission. Specifications and designs are subject to change without notice. Illustrations and pictures may include optional equipment and may not include all standard equipment. Equipment and options varies by regional availability.