

LIUGONG

922F/924F DM EXCAVATOR

ALL NEW
F-SERIES

Engine	Cummins B6.7
Net Power	116 kW
Operating Weight	22,800 kg
Bucket Capacity	1.4 m ³



TOUGH WORLD. TOUGH EQUIPMENT.



“ THE BEST MACHINES ARE DESIGNED FOR BALANCE, NOT COMPROMISE... ”

YOUR PERFORMANCE DASHBOARD

Research tells us that 6 key performance areas really matter to you. We'd like to use this performance dashboard to present the real, tough facts about our all New 922F & 924F DM.



TOUGHNESS & DURABILITY



POWER & EFFICIENCY



INTELLIGENCE & CONTROL



COMFORT & ERGONOMICS



SAFETY & VISIBILITY



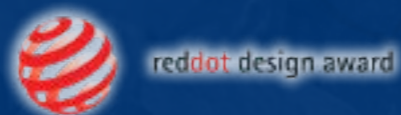
UPTIME & MAINTENANCE

With the All New 922F we've built a machine which matches your performance criteria exactly. No compromises, just everything you need. It's not rocket science, it's just customer focus matched with intelligent design.

CUSTOMER DRIVEN DESIGN...

Our customers don't like compromise, nor do we. That's why we do our homework before we start the design process to really understand how our machines are actually owned and operated.

This insight allows us to perfectly balance, the demands of the machine owner and the machine operator but without compromise.



RED DOT AWARD-WINNING DESIGN

Our UK design team were recently recognized with a prestigious Red Dot Award for our new 4180D motor grader recognising its innovation and excellence in product design.



HERE'S THE BIG PICTURE...

ALL NEW **F-SERIES**

922F & 924F DM EXCAVATOR



POWER & EFFICIENCY

NEW

- 3 new power modes - Power, Standard and Eco

IMPROVED

- Cummins VGT technology engine delivers 5% more torque
- 6 electronic fans, reduce power consumption by 60%



TOUGHNESS & DURABILITY

NEW

- Extra tough chassis - reduces stress by 10%

IMPROVED

- Extra strong boom & arm - reduces stress by 30%
- 100% flaw detection



INTELLIGENCE & CONTROL

NEW

- Electro-hydraulic control technology
- Boom float technology
- Attachment flow and pressure control



SAFETY & VISIBILITY

NEW

- 360 degree camera
- Ground level daily inspection

IMPROVED

- Anti-slip tread plates and fold down guard rails



UPTIME & MAINTENANCE

IMPROVED

- 1000h air filter cycle
- Component wear reduced by 70%
- Reduced fuel filters from 3 - 2, for lower TCO



COMFORT & ERGONOMICS

NEW

- F-Series Ergonomic cab design
- Intuitive operator interfaces & control

IMPROVED

- Quiet (68dBA) and clean (pressurised environment)

NOW FOR THE DETAIL...



“ NO MATTER WHAT YOU DO, YOU’VE GOT TO TRUST YOUR MACHINE 100% ”



TOUGHNESS AND DURABILITY
DESIGNED TO WORK HARDER, FOR LONGER



DESIGNED TO WORK HARDER, FOR LONGER...

To build machines that can withstand the hardest conditions takes intelligent design, and attention to detail. We know that a machine is only as strong as its weakest point, so every weld, every joint, every component is scrutinized to ensure it passes our rigorous durability tests. **Here's the proof.**



TOUGHNESS AND DURABILITY

1. STRONGER CHASSIS

Our X-shaped undercarriage delivers optimal structural integrity and reduces stress and deflection by **10%**.

3. EXTRA VIGILANCE

100% flaw detection ensures every weld is checked to meet our stringent standards.

5. TOUGHER BOOM AND ARM

Finite element analysis proves the load efficiency and toughness of our boom and arm, but we go further to reduce stress by **35%**.

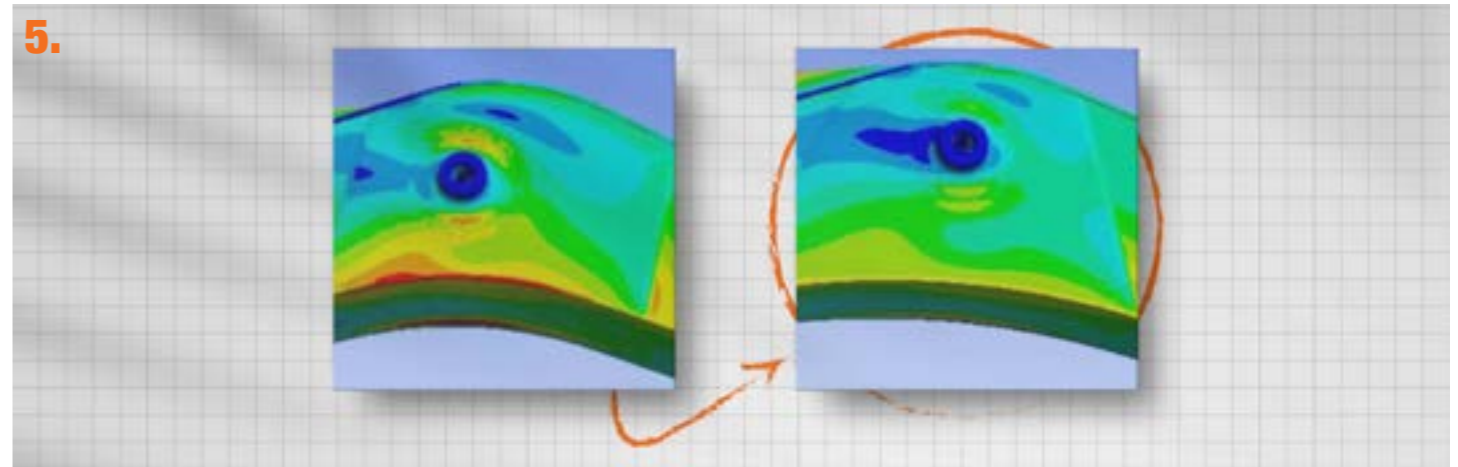
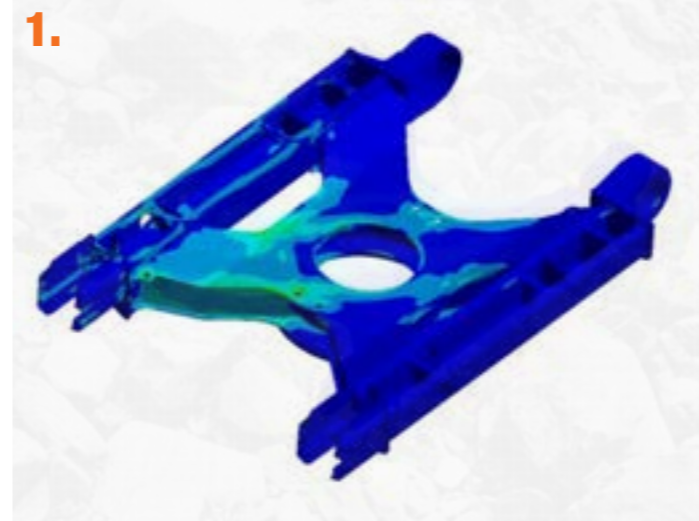
- Front and rear supports are cast, reducing welds and increasing torsional resistance
- Central ram pivot is forged to reduce stress
- EH hydraulic system reduces hoses and potential leak paths improving long-term performance

2. EXTRA PROTECTION

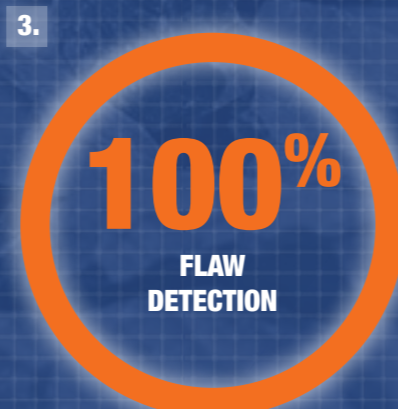
Deeper side beams provide higher impact resistance and make it quicker and easier to add additional impact plates if required.

4. INCREASED DURABILITY

Choose from our range of performance and durability enhancing extras such as our easy to fit demolition guards and heavy duty counter-weight.



PERFORMANCE STATISTICS



TOUGHNESS IS WHAT WE DO...

With over 50,000 excavators already working in the world's toughest environments, you can trust our machines to keep working harder - for longer.





“ WHY CHOOSE BETWEEN POWER AND EFFICIENCY WHEN YOU CAN HAVE BOTH? ”



POWER AND EFFICIENCY

DESIGNED TO MOVE MORE, FOR LESS



DESIGNED TO MOVE MORE, FOR LESS...

There's no need to compromise digging performance to get the highest fuel efficiency because the all New 922F gives you both. With greater torque and more power at lower engine speeds you get the power you want and the fuel efficiency you need.



POWER AND EFFICIENCY

1. MORE REAL POWER

With VGT technology, the 6.7L, six-cylinder Cummins engine delivers 5% extra torque compared to high torque at low engine speeds. VGT enables the engine to maximize its power output whilst creating less noise and using less fuel.

2. SAVE EVERY DROP OF FUEL

Engine Auto Idle and Auto Shutdown make every single drop of fuel count. Reducing unproductive fuel saves you money and helps protect the environment.

3. EXCEED YOUR EXPECTATIONS

When it comes to efficiency, the 922F is smarter than you'd think. Feed Forward control technology matches the engine's speed to the operator's command and predicted load to deliver even greater fuel economy.

4. ELECTRICAL CONTROLLED FANS

Divided into 3 groups for independent control, our intelligent fans automatically adjust to match the hydraulic oil and coolant temperature, and the requirements of the air conditioning condenser. The results are impressive.

- Maximum air volume is increased by 4%
- Maximum power consumption is reduced by 60%

5. MOVE MORE FOR LESS

We are always improving our performance, with fuel consumption reduced by 20% and efficiency increased by 10% compared to the 922E, we have delivered on that promise.

1.



3.

FEED FORWARD

OPERATOR MOVES JOYSTICK



PREDICTED MACHINE LOAD

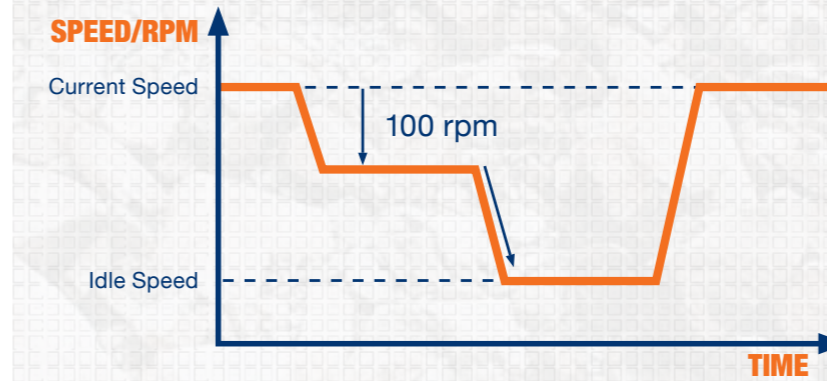
ENGINE FUELLING CORRECTION

ENGINE SPEED DROPS LESS

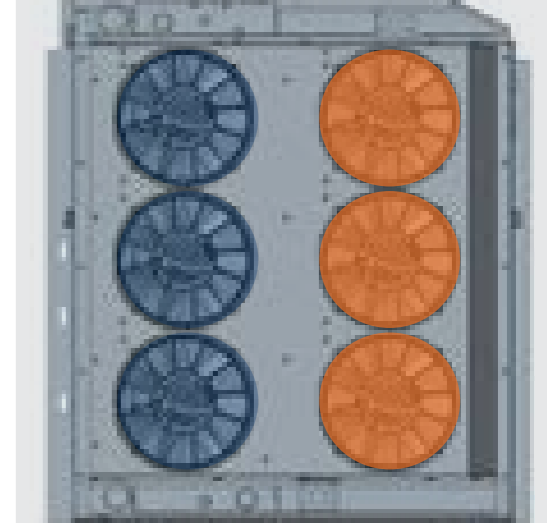


SHORTER SPEED RECOVERY

2.



4.



PERFORMANCE STATISTICS

1.

+5%

EXTRA TORQUE

5.

-20%

REDUCED FUEL FUEL CONSUMPTION

5.

+10%

INCREASE IN EFFICIENCY

WHY COMPROMISE?

The all New 922F let's you do more, for less cost, and with less environmental impact, don't settle for anything less.

“ TOUGH MACHINES CAN BE INTELLIGENT TOO ”



INTELLIGENCE AND CONTROL

DESIGNED TO WORK SMARTER



DESIGNED TO WORK SMARTER

Smart operators choose smart machines because they know their job is tough enough. When it comes to intelligence and control the all New 922F may surprise you as it's packed with smart features to make life easier.



INTELLIGENCE AND CONTROL

1. CHOOSE YOUR MODE

With a choice of 3 Integrated Work Modes each designed to match the engine speed, pump flow and system pressure to your chosen application, it's easy to find the perfect balance of performance and economy.

3. USE OUR BRAINS

With a suite of Smart functions at your fingertips you can control your attachment properties from the comfort of your cab. It's easy:

- ▣ Adjustable flow control
- ▣ Adjustable pressure control
- ▣ 10 attachment settings

5. WORK SMARTER WITH BOOM FLOAT

Improves performance and prolongs tool life by preventing excessive pressure during braking applications.

Perfect for smooth levelling and deep excavation work, this smart function reduces fuel consumption by allowing the boom to fall under its own mass.

2. ELECTRO-HYDRAULIC CONTROL

The state-of-the-art full electro-hydraulic system from Kawasaki provides lightning fast signals between the joysticks, pumps and valve blocks to deliver pin point precision and maximize available engine power.

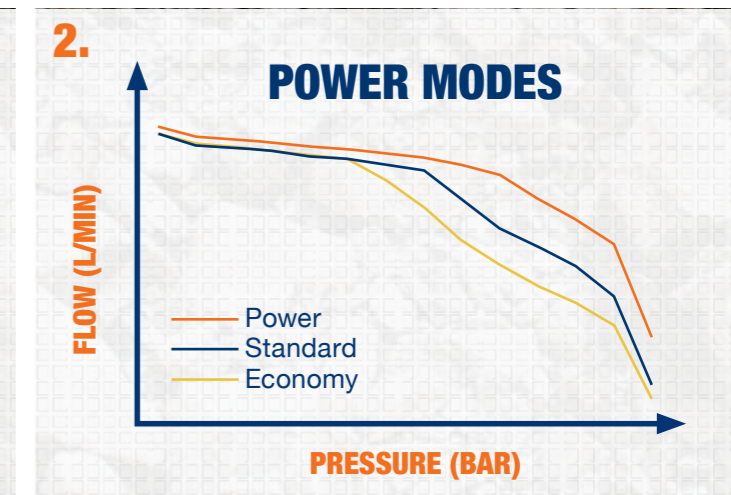
4. LARGER HYDRAULIC PUMP

The electronically controlled main pump displacement has increased by 12% to 130 cc. The larger pump can deliver more torque at lower engine speed compared to E Series.

1. **ECONOMY (E) MODE**
FOR LIGHT WORK

STANDARD (S) MODE
FOR STANDARD OPERATION

POWER (P) MODE
FOR HEAVY DUTY



SMART IDEAS IN ACTION

The all New 922F has the perfect balance of toughness and intelligence designed to keep you in control.

PERFORMANCE STATISTICS

2. **+14%** INCREASE IN SLEW TORQUE

3. **+12%** MAIN PUMP DISPLACEMENT INCREASE

1. **x3** DEDICATED POWER MODES

4. **x10** ATTACHMENT SETTINGS



“ TOUGH DAYS GO FASTER WHEN YOU’RE WORKING IN COMFORT ”

LIUGONG

COMFORT AND ERGONOMICS

DESIGNED AROUND THE OPERATOR



DESIGNED AROUND THE OPERATOR

Climb into the spacious cab and you'll know that it has been designed by a team that really knows what its like to be an operator. Talking, listening and observing operators, our design team spend almost as much time in the cab as they do with the CAD. The result? One of the most ergonomic and comfortable cabs you can get.



COMFORT AND ERGONOMICS

1. PERFECT CONTROL

- From the ergonomically positioned non-slip pedals to the multi-functional joysticks, the cab interior represents a masterclass in design.
- Every action and movement requires the minimum of effort from the operator.
- Boom float, travel speed and proportional auxiliary controls are customizable and finger tip controlled - you can even mute your music!

2. YOUR CHOICE OF SEAT

Every operator is different, so we offer a range of seats and joystick configurations to suit everyone.

- Mechanical suspension standard seat
- Comfort level, air suspension seat with adjustable lumbar support.
- Luxury level, heated air suspension seat with adjustable lumbar and premium padding.

2. IT'S SO QUIET

The NVH design reduces wind resistance and noise. Compared with traditional direct-drive fans our new electronic fans are quieter by 9%. The external radiated noise of the machine is best in class at 68dB.

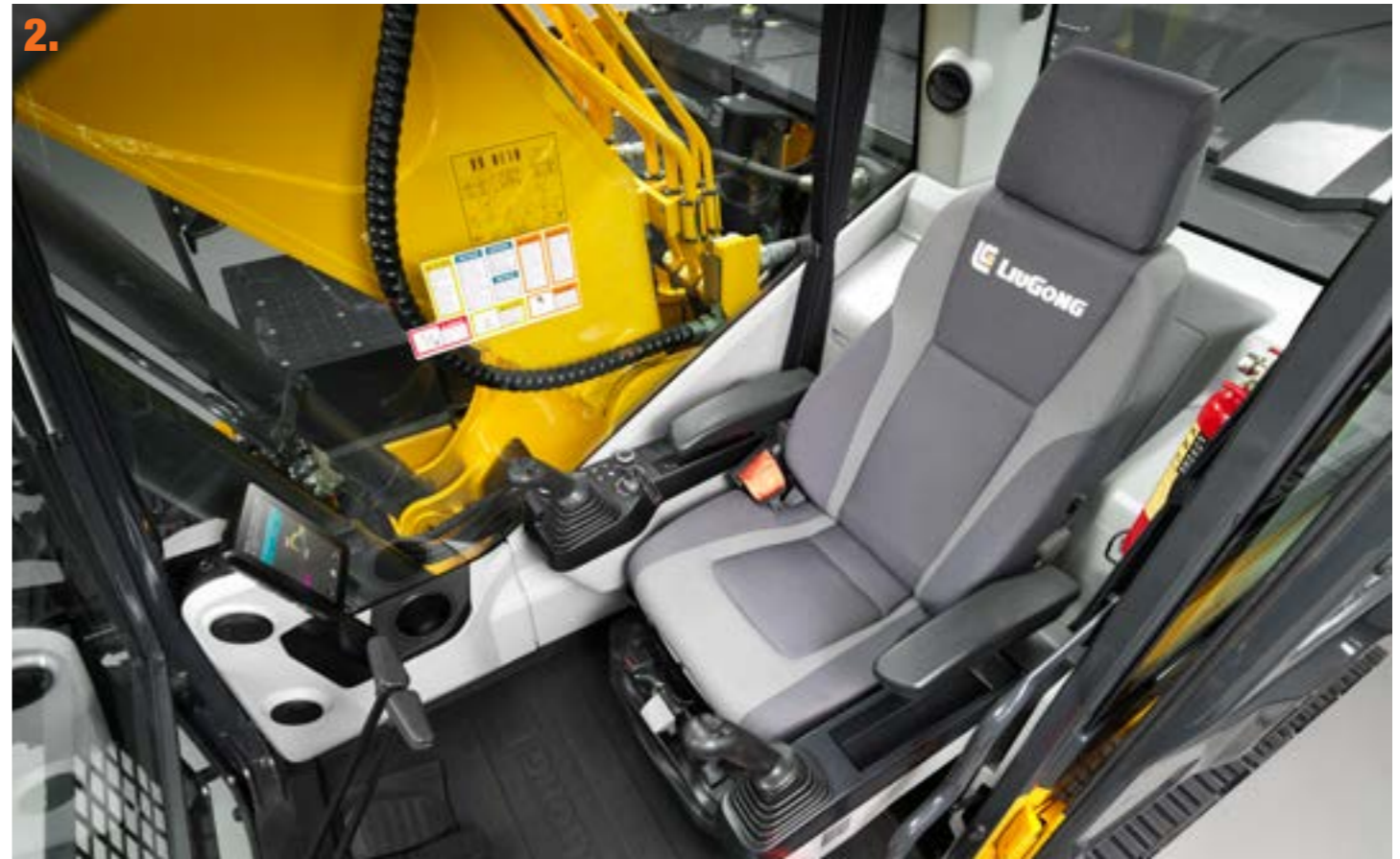
3. INTUITIVE INTERFACE

We've designed the operator interface to be even more intuitive and easy to use. The large 8-inch LCD colour screen can be controlled via touchscreen or by a fingertip navigational control dial conveniently sited in the armrest control panel.

2. MAKE IT YOUR PLACE

We never forget that a machine is not just a tool, it's your place for many hours a day (and night). So, we've remembered all the little things that make it feel like home.

- Cool box for food & drinks
- Large storage box and rack
- Drinks holder
- Phone holder with 12V charging, USB and AUX ports



PERFECTLY MATCHED TO YOU

The all New 922F gives you the operating environment you would design for yourself.

TICKS ALL THE RIGHT BOXES

- INTUITIVE LCD OPERATOR CONSOLE
- FULLY PRESSURIZED (100PA)
- ENHANCED VISIBILITY
- CUSTOMIZABLE OPERATING HANDLE
- ERGONOMIC LAYOUT
- ADVANCE AIR-CON AND TEMPERATURE CONTROL
- HIGH COMFORT, FULLY ADJUSTABLE SEAT
- LOW NOISE AND LOW VIBRATION



“ WE CONSTANTLY ASK... HOW CAN WE MAKE OUR MACHINES EVEN SAFER ”



SAFETY AND VISIBILITY

DESIGNED TO PROTECT



SAFER ALL-ROUND ACCESS

Being protected in the cab is important, but accident research shows us that most accidents occur outside of the machine. We've taken the challenge to make our machines even safer to be around.



SAFETY AND VISIBILITY

1. MORE PROTECTION WHERE YOU NEED IT

The driver protection system delivers even greater protection to the front and top of the cab and protects the operator from falling rocks and debris. The front screen has a hinge design making cleaning and maintenance easier.

2. WATCH YOUR STEP

- The new 0.5m wide stepped boarding channel with non-slip treadplates makes getting on and off the machine safer
- The engine compartment features a gripped access platform.
- Optional guard rails or integral fences on the left and right sides of the upper platform increase safety and can be folded down for easy transportation.

3. EMERGENCY STOP

The ground level emergency stop switch is fitted as standard.

4. BE SAFE. BE SEEN

LED work light for better night visibility is fitted as standard.

5. SEE THE WHOLE SITE

Our cab design provides the operator with the very best view of the site, from every angle. Smart design ideas such as integrating the steps into the line of the cabin, improve visibility on the right hand side giving a 180 degree view.

6. SAFER MAINTENANCE ACCESS

No need to climb on the machine, all the daily maintenance points, including the oil level check point are easily accessible from the ground.

7. NO BLIND SPOTS

With 360 degree camera as standard in Europe, you can get an uninterrupted panoramic view around the machine at all angles from the large LCD screen.



BETTER BY DESIGN

LiuGong's Red Dot Award winning design* team is rapidly building a reputation for un-matched visibility. When you can see more you can do more, whilst protecting yourself and people around the machine.

With the All New 922F we've pushed the barriers and taken visibility another step forward.

*4180D Motorgrader



reddot design award

YOUR SAFETY - OUR PRIORITY

The all New 922F has the perfect balance toughness and intelligence designed to keep you in control.



“ CAN DAILY MAINTENANCE REALLY BE AS SIMPLE AS THIS? ”



UPTIME AND MAINTENANCE

DESIGNED TO BE EASY TO SERVICE AND MAINTAIN



EASY TO OWN AND EASY TO MAINTAIN

We understand that when your machine's not working, it's not earning. To maximize your productive hours, we've made the All New 922F even easier to maintain, helping you make every productive second count.



MAINTENANCE AND UPTIME

1. FULLY SYNCHRONIZED MAINTENANCE

Maintenance should be simple so to save you time, all engine oil filter replacement cycles have been synchronized.

2. SPACE FOR YOUR KIT

We've increased the storage space behind the cab and added a segregating tray to create a useful space for your maintenance kit such as grease guns and lifting equipment.

3. NO RISK - LOW LEVEL ACCESS

Convenience and safety should never be compromised.

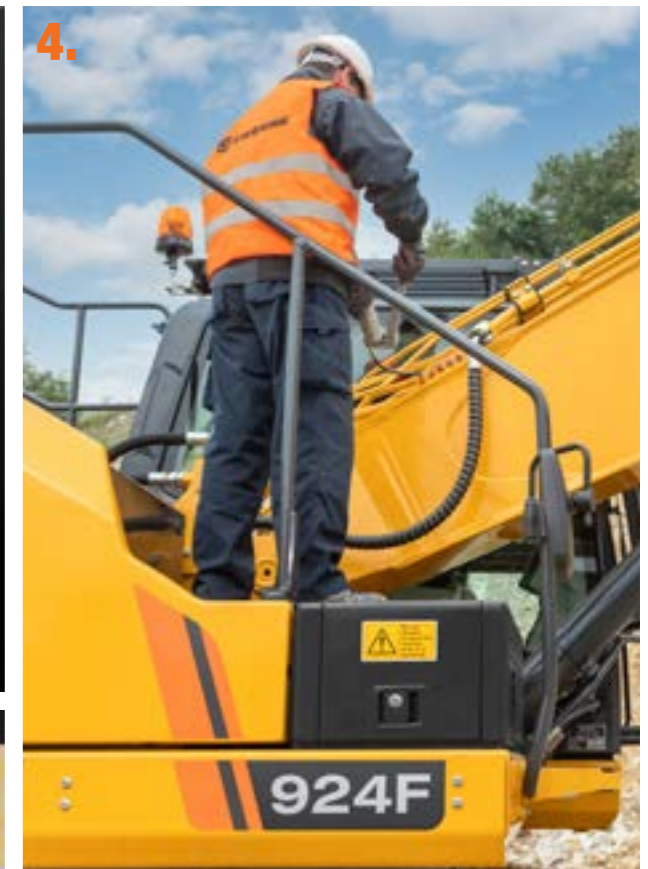
- The easy to access optional re-fuelling pump is safely stowed behind the bay door.
- All filters are located close to the bay doors for safe access and speedy maintenance.
- Low level access to DEF tank reduces the need to climb up onto the upper structure.

4. MAKING IT FASTER EVERYDAY

By grouping the greasing points together on the boom base, top of the dipper and slew bearing we make daily maintenance faster and easier. Optional automatic lubrication pipeline gives you easy access to all the lubrication points in one place, saving you even more time on daily maintenance.

5. 1000H MAINTENANCE CYCLE

Our red-designed air filter with large ash capacity now has a 1000-hour maintenance cycle – that's one job less to think about.



PERFORMANCE STATISTICS

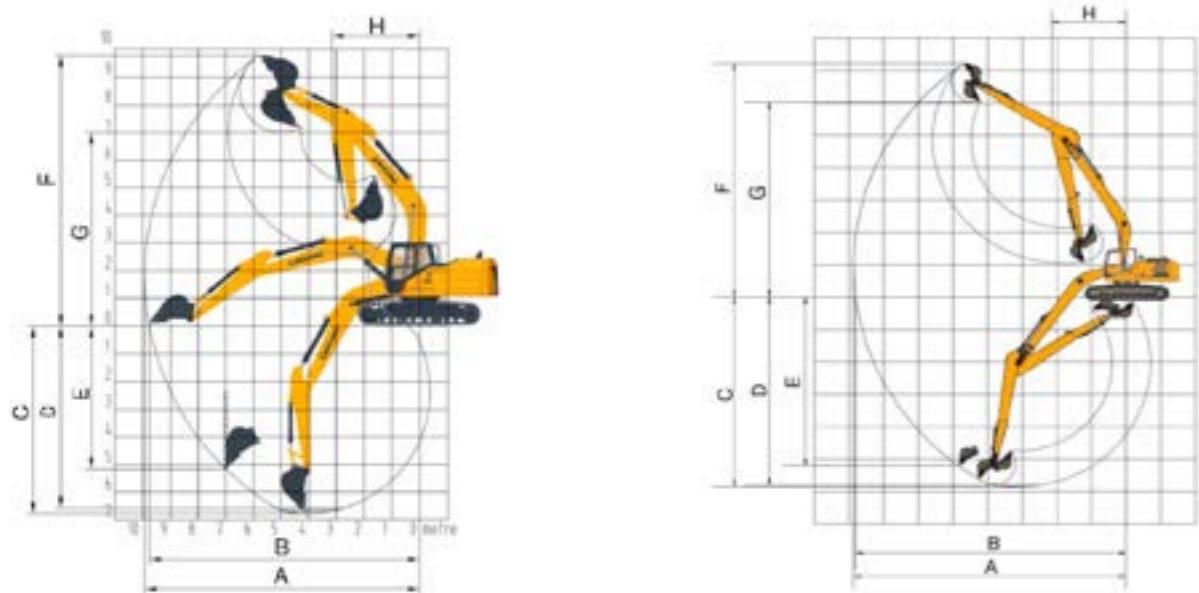
1. **500mm**
WIDE ACCESS STEPS

5. **1000 hour**
AIR FILTER LIFE

5. **+14%**
FINER FUEL FILTER ELEMENTS

3. **GROUND LEVEL MAINTENANCE**





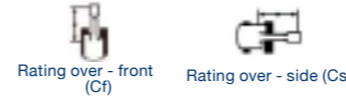
WORKING RANGE	922F	922F	922F	922FN	924FDM	922FLL
Boom Length	5,710 mm	5,710 mm	5,710 mm	5,710 mm	5,710 mm	8,850 mm
Arm Length	2,915 mm	2,400 mm	3,500 mm	2,915 mm	2,915 mm	6,250 mm
A. Max. Digging Reach	9,870 mm	9,530 mm	10,485 mm	9,870 mm	9,870 mm	15,635 mm
B. Max. Digging Reach on Ground	9,720 mm	9,360 mm	10,325 mm	9,720 mm	9,720 mm	15,530 mm
C. Max. Digging Depth	6,700 mm	6,250 mm	7,345 mm	6,700 mm	6,700 mm	12,170 mm
D. Max. Digging Depth, 2.44 m (8') level	6,540 mm	6,050 mm	7,185 mm	6,540 mm	6,540 mm	12,070 mm
E. Max. Vertical Wall Digging Depth	5,135 mm	5,175 mm	5,920 mm	4,820 mm	4,820 mm	9,950 mm
F. Max. Cutting Height	9,740 mm	9,810 mm	10,200 mm	9,740 mm	9,740 mm	13,730 mm
G. Max. Dumping Height	7,000 mm	7,010 mm	7,455 mm	7,000 mm	7,000 mm	11,340 mm
H. Min. Front Swing Radius	3,135 mm	3,210 mm	3,170 mm	3,135 mm	3,135 mm	4,410 mm
Bucket Digging Force (ISO)	Normal	97 KN	116 KN	88 KN	97 KN	53 KN
	Power Boost	105 KN	126 KN	96 KN	105 KN	-
Arm Digging Force (ISO)	Normal	140 KN	140 KN	140 KN	140 KN	69 KN
	Power Boost	152.5 KN	152.5 KN	152.5 KN	152.5 KN	-
Bucket Capacity	1.1 m ³	1.1 m ³	1.0 m ³	1.1 m ³	1.0 m ³	0.45 m ³
Bucket Tip Radius	1,478 mm	1,478 mm	1,478 mm	1,478 mm	1,478 mm	1,260 mm

BUCKET SELECTION GUIDE								
Bucket type	Capacity	Cutting width	Weight	Teeth pcs	5.71 m Boom			8.85 m Boom
	m ³				2.915 m arm	2.4 m arm	3.5 m Arm	6.25 m arm
General type	0.45	865	380	4	NA	NA	NA	B
Earth type	0.9	1,200	737	5	B	B	B	NA
Earth type	1.0	1,260	779	5	B	B	B	NA
Earth type	1.1	1,330	805	5	B	B	B	NA
Earth type	1.2	1,390	835	5	B	B	NA	NA
General type	1.0	1,260	988	5	C	C	C	NA
General type	1.1	1,330	1,025	5	C	C	NA	NA
Rock type	1.0	1,300	1,019	5	D	D	NA	NA
Rock type	1.1	1,370	1,064	5	D	D	NA	NA

The recommendations are given as a guide only, based on typical operation conditions. Bucket capacity based on ISO 7451, heaped material with a 1:1 angle of repose.

Maximum material density:
 A 1,200 - 1,300 kg/m³: Coal, Caliche, Shale
 B 1,400 - 1,600 kg/m³: Wet earth and clay, limestone, sandstone
 C 1,700 - 1,800 kg/m³: Granite, wet sand, well blasted rock
 D 1,900 kg/m³: Wet mud, Iron ore
 NA. Not applicable

Lifting capacity at the arm end without bucket.
 For lifting capacity including bucket, weight of the bucket or the bucket with quick coupler must be deducted from the lifting capacities.
 Lifting capacities are based on the machine standing on a firm, uniform supporting surface.



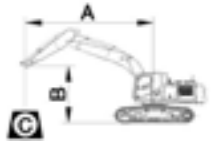
- Do not attempt to lift or hold any load that is greater than these rated values at their specified load radius and height. Weight of all accessories must be deducted from the above lifting capacities.
- The rated loads are in compliance with ISO 10567 Hydraulic Excavator Lift Capacity Rating Standard. They do not exceed 87% of hydraulic lifting capacity or 75% tipping load.
- Ratings at bucket lift hook.
- Lifting capacities are based on machine standing on level, firm and uniform ground.
- *Indicates the load is limited by hydraulic capacity rather than tipping capacity.
- Operator should be fully acquainted with the Operator's and Maintenance Instructions before operating this machine and rules for the safe operation of equipment should be adhered to at all times.

LIFTING CAPACITY (METRIC)

922F with 600 mm shoes, 2,915 mm arm

Conditions

Boom length: 5,710mm
 Arm length: 2,915mm
 Bucket: None
 Counterweight: 4,000 kg
 Shoes: 600 mm triple grouser
 Unit: kg

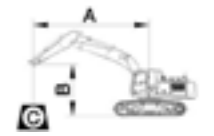


B (m)	A (Unit: m)										MAX REACH		
	3		4.5		6		7		8		Cf	Cs	A
	Cf	Cs	Cf	Cs	Cf	Cs	Cf	Cs	Cf	Cs			
7.5 kg					*4257	*4257					*3912	*3912	6.1
6 kg					*4554	*4554					*3853	*3853	7.2
4.5 kg			*5733	*5733	*5037	*5037	*4739	3789			*3838	3473	7.9
3 kg			*7400	*7400	*5807	5075	*5072	3668	*4935	3324	*3785	3135	8.3
1.5 kg			*8973	7033	*6609	4789	*5474	3529	*5231	3221	*3928	3000	8.4
0 kg	*6059	*6059	*9847	6699	*7191	4582	5671	3421	5181	3141	*4458	3040	8.2
-1.5 kg	*10202	*10202	*9981	6597	*7385	4488	5628	3381			5434	3275	7.7
-3 kg	*13382	12539	*9414	6658	*7010	4518					*5983	3873	6.8
-4.5 kg	*10877	*10877	*7790	6894							*6290	5402	5.4

922F with 700 mm shoes, 2,915 mm arm

Conditions

Boom length: 5,710 mm
 Arm length: 2,915 mm
 Bucket: None
 Counterweight: 4,000 kg
 Shoes: 700 mm triple grouser
 Unit: kg



B (m)	A (Unit: m)										Max Reach		
	3		4.5		6		7.5		8		Cf	Cs	A
	Cf	Cs	Cf	Cs	Cf	Cs	Cf	Cs	Cf	Cs			
7.5 kg					*4260	*4260					*3916	*3916	6.1
6 kg					*4592	*4592					*3858	*3858	7.2
4.5 kg			*5783	*5783	*5079	*5079	*4774	3874			*3843	3555	7.9
3 kg			*7458	*7458	*5852	5187	*5109	3756	*4970	3405	*3791	3213	8.3
1.5 kg			*9033	7199	*6655	4904	*5511	3618	*5265	3303	*3935	3077	8.4
0 kg	*6062	*6062	*9906	6865	*7236	4697	5781	3508	5281	3222	*4467	3118	8.2
-1.5 kg	*10205	*10205	*10033	6758	*7426	4601	5733	3466			*5446	3357	7.7
-3 kg	*13437	12804	*9457	6811	*7045	4625					*6012	3963	6.8
-4.5 kg	*10917	*10917	*7823	7035							*6316	5512	5.4



Lifting capacity at the arm end without bucket.
For lifting capacity including bucket, weight of the bucket or the bucket with quick coupler must be deducted from the lifting capacities.

Lifting capacities are based on the machine standing on a firm, uniform supporting surface.



Rating over - front (Cf)



Rating over - side (Cs)

- Do not attempt to lift or hold any load that is greater than these rated values at their specified load radius and height. Weight of all accessories must be deducted from the above lifting capacities.
- The rated loads are in compliance with ISO 10567 Hydraulic Excavator Lift Capacity Rating Standard. They do not exceed 87% of hydraulic lifting capacity or 75% tipping load.

- Ratings at bucket lift hook.
- Lifting capacities are based on machine standing on level, firm and uniform ground.
- *Indicates the load is limited by hydraulic capacity rather than tipping capacity.
- Operator should be fully acquainted with the Operator's and Maintenance Instructions before operating this machine and rules for the safe operation of equipment should be adhered to at all times.

Lifting capacity at the arm end without bucket.
For lifting capacity including bucket, weight of the bucket or the bucket with quick coupler must be deducted from the lifting capacities.

Lifting capacities are based on the machine standing on a firm, uniform supporting surface.



Rating over - front (Cf)



Rating over - side (Cs)

- Do not attempt to lift or hold any load that is greater than these rated values at their specified load radius and height. Weight of all accessories must be deducted from the above lifting capacities.
- The rated loads are in compliance with ISO 10567 Hydraulic Excavator Lift Capacity Rating Standard. They do not exceed 87% of hydraulic lifting capacity or 75% tipping load.

- Ratings at bucket lift hook.
- Lifting capacities are based on machine standing on level, firm and uniform ground.
- *Indicates the load is limited by hydraulic capacity rather than tipping capacity.
- Operator should be fully acquainted with the Operator's and Maintenance Instructions before operating this machine and rules for the safe operation of equipment should be adhered to at all times.

LIFTING CAPACITY (METRIC)

922F with 800 mm shoes, 2,915 mm arm

Conditions

Boom length: 5,710 mm
Arm length: 2,915 mm
Bucket: None
Counterweight: 4,000 kg
Shoes: 800 mm triple grouser
Unit: kg



A: Load radius
B: Load point height
C: Lifting capacity
Cf: Rating over front
Cs: Rating over side

B (m)	A (Unit: m)												Max Reach	
	3		4.5		6		7.5		8					
	Cf	Cs	Cf	Cs	Cf	Cs	Cf	Cs	Cf	Cs	Cf	Cs		
7.5	kg					*4260	*4260					*3916	*3916	6.1
6	kg					*4592	*4592					*3858	*3858	7.2
4.5	kg			*5783	*5783	*5079	*5079	*4774	3943			*3843	3619	7.9
3	kg			*7458	*7458	*5852	5277	*5109	3824	*4970	3469	*3791	3274	8.3
1.5	kg			*9033	7330	*6655	4994	*5511	3686	*5265	3366	*3935	3137	8.4
0	kg	*6062	*6062	*9906	6995	*7236	4787	*5813	3577	5372	3285	*4467	3180	8.2
-1.5	kg	*10205	*10205	*10033	6888	*7426	4691	*5824	3534			*5446	3423	7.7
-3	kg	*13437	13043	*9457	6941	*7045	4715					*6012	4040	6.8
-4.5	kg	*10917	*10917	*7823	7165							*6316	5615	5.4

922F with 900 mm shoes, 2,915 mm arm

Conditions

Boom length: 5,710 mm
Arm length: 2,915 mm
Bucket: None
Counterweight: 4,000 kg
Shoes: 900 mm triple grouser
Unit: kg



A: Load radius
B: Load point height
C: Lifting capacity
Cf: Rating over front
Cs: Rating over side

B (m)	A (Unit: m)												Max Reach	
	3		4.5		6		7.5		8					
	Cf	Cs	Cf	Cs	Cf	Cs	Cf	Cs	Cf	Cs	Cf	Cs		
7.5	kg					*4260	*4260					*3916	*3916	6.1
6	kg					*4592	*4592					*3858	*3858	7.2
4.5	kg			*5783	*5783	*5079	*5079	*4774	4011			*3843	3683	7.9
3	kg			*7458	*7458	*5852	5367	*5109	3892	*4970	3532	*3791	3334	8.3
1.5	kg			*9033	7460	*6655	5083	*5511	3754	*5265	3429	*3935	3197	8.4
0	kg	*6062	*6062	*9906	7125	*7236	4876	*5813	3645	5463	3348	*4467	3241	8.2
-1.5	kg	*10205	*10205	*10033	7018	*7426	4780	*5824	3602			*5446	3489	7.7
-3	kg	*13437	13281	*9457	7071	*7045	4804					*6012	4116	6.8
-4.5	kg	*10917	*10917	*7823	7295							*6316	5717	5.4

LIFTING CAPACITY (METRIC)

922F with 600 mm shoes, 2,400 mm arm

Conditions

Boom length: 5,710mm
Arm length: 2,400mm
Bucket: None
Counterweight: 4,000 kg
Shoes: 600 mm triple grouser
Unit: kg



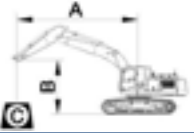
A: Load radius
B: Load point height
C: Lifting capacity
Cf: Rating over front
Cs: Rating over side

B (m)	A (Unit: m)												Max Reach	
	3		4.5		6		7.5		8					
	Cf	Cs	Cf	Cs	Cf	Cs	Cf	Cs	Cf	Cs	Cf	Cs		
7.5	kg											*5316	*5316	5.6
6	kg									*5114	*5114	*5170	4453	6.8
4.5	kg			*8953	*8953	*6487	*6487	*5542	5315			*5218	3763	7.5
3	kg					*8160	7520	*6272	5058	*5448	3679	*5344	3398	7.9
1.5	kg			*9574	7005	*6999	4808	*5774	3566			5291	3258	8
0	kg			*10163	6767	*7459	4642	5722	3485			5422	3315	7.8
-1.5	kg	*9608	*9608	*10022	6726	*7481	4585					5930	3598	7.3
-3	kg	*12578	*12578	*9152	6826	*6776	4658					*6145	4317	6.4
-4.5	kg	*9532	*9532	*6836	*6836							*6031	*6031	4.9

922F with 600 mm shoes, 3,500 mm arm

Conditions

Boom length: 5,710mm
Arm length: 3,500mm
Bucket: None
Counterweight: 4,000 kg
Shoes: 600 mm triple grouser
Unit: kg



A: Load radius
B: Load point height
C: Lifting capacity
Cf: Rating over front
Cs: Rating over side

B (m)	A (Unit: m)												Max Reach	
	3		4.5		6		7.5		8					
	Cf	Cs	Cf	Cs	Cf	Cs	Cf	Cs	Cf	Cs	Cf	Cs		
7.5	kg					*3925	*3925					*3214	*3214	6.8
6	kg					*3996	*3996	*3930	3920			*2822	*2822	7.9
4.5	kg					*4510	*4510	*4300	3845	*4278	3457	*2965	*2965	8.5
3	kg	*9916	*9916	*6575	*6575	*5310	5147	*4694	3696	*4569	3347	*3245	2870	8.8
1.5	kg	*6445	*6445	*8281	7137	*6180	4817	*5158	3528	*4936	3215	*3355	2742	8.9
0	kg	*6857	*6857	*9428	6685	*6880	4559	*5551	3387	5149	3103	*3834	2767	8.7
-1.5	kg	*9575	*9575	*9853	6495	*7240	4417	5557	3309	5088	3048	*4057	2912	8.3
-3	kg	*13665	12201	*9594	6494	*7124	4398					*5321	3331	7.5
-4.5	kg	*12080	*12080	*8481	6664	*6160	4535					*5716	4277	6.3



Lifting capacity at the arm end without bucket.
For lifting capacity including bucket, weight of the bucket or the bucket with quick coupler must be deducted from the lifting capacities.
Lifting capacities are based on the machine standing on a firm, uniform supporting surface.



Rating over - front (Cf)



Rating over - side (Cs)

- Do not attempt to lift or hold any load that is greater than these rated values at their specified load radius and height. Weight of all accessories must be deducted from the above lifting capacities.
- The rated loads are in compliance with ISO 10567 Hydraulic Excavator Lift Capacity Rating Standard. They do not exceed 87% of hydraulic lifting capacity or 75% tipping load.

- Ratings at bucket lift hook.
- Lifting capacities are based on machine standing on level, firm and uniform ground.
- *Indicates the load is limited by hydraulic capacity rather than tipping capacity.
- Operator should be fully acquainted with the Operator's and Maintenance Instructions before operating this machine and rules for the safe operation of equipment should be adhered to at all times.

Lifting capacity at the arm end without bucket.
For lifting capacity including bucket, weight of the bucket or the bucket with quick coupler must be deducted from the lifting capacities.
Lifting capacities are based on the machine standing on a firm, uniform supporting surface.



Rating over - front (Cf)



Rating over - side (Cs)

- Do not attempt to lift or hold any load that is greater than these rated values at their specified load radius and height. Weight of all accessories must be deducted from the above lifting capacities.
- The rated loads are in compliance with ISO 10567 Hydraulic Excavator Lift Capacity Rating Standard. They do not exceed 87% of hydraulic lifting capacity or 75% tipping load.

- Ratings at bucket lift hook.
- Lifting capacities are based on machine standing on level, firm and uniform ground.
- *Indicates the load is limited by hydraulic capacity rather than tipping capacity.
- Operator should be fully acquainted with the Operator's and Maintenance Instructions before operating this machine and rules for the safe operation of equipment should be adhered to at all times.

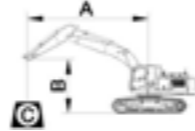
LIFTING CAPACITY (METRIC)

922FN with 600 mm shoes, 2,915 mm arm

A: Load radius
B: Load point height
C: Lifting capacity
Cf: Rating over front
Cs: Rating over side

Conditions

Boom length: 5,710mm
Arm length: 2,915mm
Bucket: None
Counterweight: 4,000 kg
Shoes: 600 mm triple grouser
Unit: kg



B (m)		A (Unit: m)												Max Reach
		3		4.5		6		7.5		8				
		Cf	Cs	Cf	Cs	Cf	Cs	Cf	Cs	Cf	Cs	Cf	Cs	A
7.5	kg					*4260	*4260			*3916	*3916			6.1
6	kg					*4592	*4592			*3858	3777			7.2
4.5	kg			*5783	*5783	*5079	4927	*4774	3485			*3843	3192	7.9
3	kg			*7458	6950	*5852	4653	*5109	3368	*4970	3050	*3791	2875	8.3
1.5	kg			*9033	6373	*6655	4375	*5511	3232	5255	2949	*3935	2746	8.4
0	kg	*6062	*6062	*9906	6047	*7236	4172	5656	3124	5166	2869	*4467	2777	8.2
-1.5	kg	*10205	*10205	*10033	5943	*7426	4077	5608	3082			5414	2986	7.7
-3	kg	*13437	11044	*9457	5995	*7045	4101					*6012	3524	6.8
-4.5	kg	*10917	*10917	*7823	6213							*6316	4896	5.4

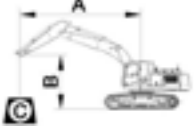
LIFTING CAPACITY (METRIC)

922FN with 800 mm shoes, 2,915 mm arm

A: Load radius
B: Load point height
C: Lifting capacity
Cf: Rating over front
Cs: Rating over side

Conditions

Boom length: 5710 mm
Arm length: 2,915 mm
Bucket: None
Counterweight: 4,000 kg
Shoes: 800 mm triple grouser
Unit: kg



B (m)		A (Unit: m)												Max Reach
		3		4.5		6		7.5		8				
		Cf	Cs	Cf	Cs	Cf	Cs	Cf	Cs	Cf	Cs	Cf	Cs	A
7.5	kg					*4260	*4260			*3916	*3916			6.1
6	kg					*4592	*4592			*3858	*3858			7.2
4.5	kg			*5783	*5783	*5079	*5079	*4774	3613			*3843	3313	7.9
3	kg			*7458	7191	*5852	4820	*5109	3496	*4970	3169	*3791	2989	8.3
1.5	kg			*9033	6614	*6655	4542	*5511	3359	*5265	3068	*3935	2858	8.4
0	kg	*6062	*6062	*9906	6288	*7236	4339	*5813	3252	5348	2988	*4467	2892	8.2
-1.5	kg	*10205	*10205	*10033	6184	*7426	4245	5807	3210			*5446	3110	7.7
-3	kg	*13437	11475	*9457	6236	*7045	4268					*6012	3667	6.8
-4.5	kg	*10917	*10917	*7823	6453							*6316	5086	5.4

922FN with 700 mm shoes, 2,915 mm arm

A: Load radius
B: Load point height
C: Lifting capacity
Cf: Rating over front
Cs: Rating over side

Conditions

Boom length: 5710 mm
Arm length: 2,915 mm
Bucket: None
Counterweight: 4,000 kg
Shoes: 700 mm triple grouser
Unit: kg



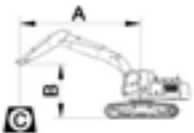
B (m)		A (Unit: m)												Max Reach
		3		4.5		6		7.5		8				
		Cf	Cs	Cf	Cs	Cf	Cs	Cf	Cs	Cf	Cs	Cf	Cs	A
7.5	kg					*4260	*4260			*3916	*3916			6.1
6	kg					*4592	*4592			*3858	3844			7.2
4.5	kg			*5783	*5783	*5079	5010	*4774	3548			*3843	3252	7.9
3	kg			*7458	7070	*5852	4736	*5109	3431	*4970	3109	*3791	2932	8.3
1.5	kg			*9033	6492	*6655	4458	*5511	3295	*5265	3008	*3935	2802	8.4
0	kg	*6062	*6062	*9906	6167	*7236	4255	5754	3188	5256	2928	*4467	2834	8.2
-1.5	kg	*10205	*10205	*10033	6063	*7426	4160	5707	3146			*5446	3048	7.7
-3	kg	*13437	11259	*9457	6115	*7045	4184					*6012	3595	6.8
-4.5	kg	*10917	*10917	*7823	6332							*6316	4990	5.4

922FN with 900 mm shoes, 2,915 mm arm

A: Load radius
B: Load point height
C: Lifting capacity
Cf: Rating over front
Cs: Rating over side

Conditions

Boom length: 5710 mm
Arm length: 2,915 mm
Bucket: None
Counterweight: 4,000 kg
Shoes: 900 mm triple grouser
Unit: kg



B (m)		A (Unit: m)												Max Reach
		3		4.5		6		7.5		8				
		Cf	Cs	Cf	Cs	Cf	Cs	Cf	Cs	Cf	Cs	Cf	Cs	A
7.5	kg					*4260	*4260			*3916	*3916			6.1
6	kg					*4592	*4592			*3858	*3858			7.2
4.5	kg			*5783	*5783	*5079	*5079	*4774	3677			*3843	3373	7.9
3	kg			*7458	7312	*5852	4904	*5109	3560	*4970	3228	*3791	3046	8.3
1.5	kg			*9033	6734	*6655	4625	*5511	3424	*5265	3127	*3935	2914	8.4
0	kg	*6062	*6062	*9906	6409	*7236	4423	*5813	3316	5440	3047	*4467	2950	8.2
-1.5	kg	*10205	*10205	*10033	6305	*7426	4328	*5824	3274			*5446	3172	7.7
-3	kg	*13437	11691	*9457	6356	*7045	4352					*6012	3739	6.8
-4.5	kg	*10917	*10917	*7823	6574							*6316	5181	5.4



Lifting capacity at the arm end without bucket.
For lifting capacity including bucket, weight of the bucket or the bucket with quick coupler must be deducted from the lifting capacities.
Lifting capacities are based on the machine standing on a firm, uniform supporting surface.



Rating over - front (Cf)



Rating over - side (Cs)

- Do not attempt to lift or hold any load that is greater than these rated values at their specified load radius and height. Weight of all accessories must be deducted from the above lifting capacities.
- The rated loads are in compliance with ISO 10567 Hydraulic Excavator Lift Capacity Rating Standard. They do not exceed 87% of hydraulic lifting capacity or 75% tipping load.

- Ratings at bucket lift hook.
- Lifting capacities are based on machine standing on level, firm and uniform ground.
- *Indicates the load is limited by hydraulic capacity rather than tipping capacity.
- Operator should be fully acquainted with the Operator's and Maintenance Instructions before operating this machine and rules for the safe operation of equipment should be adhered to at all times.

Lifting capacity at the arm end without bucket.
For lifting capacity including bucket, weight of the bucket or the bucket with quick coupler must be deducted from the lifting capacities.
Lifting capacities are based on the machine standing on a firm, uniform supporting surface.



Rating over - front (Cf)



Rating over - side (Cs)

- Do not attempt to lift or hold any load that is greater than these rated values at their specified load radius and height. Weight of all accessories must be deducted from the above lifting capacities.
- The rated loads are in compliance with ISO 10567 Hydraulic Excavator Lift Capacity Rating Standard. They do not exceed 87% of hydraulic lifting capacity or 75% tipping load.

- Ratings at bucket lift hook.
- Lifting capacities are based on machine standing on level, firm and uniform ground.
- *Indicates the load is limited by hydraulic capacity rather than tipping capacity.
- Operator should be fully acquainted with the Operator's and Maintenance Instructions before operating this machine and rules for the safe operation of equipment should be adhered to at all times.

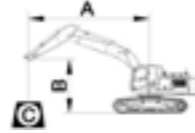
LIFTING CAPACITY (METRIC)

924FDM with 600 mm shoes, 2,915 mm arm

A: Load radius
B: Load point height
C: Lifting capacity
Cf: Rating over front
Cs: Rating over side

Conditions

Boom length: 5,710mm
Arm length: 2,915mm
Bucket: None
Counterweight: 5,000 kg
Shoes: 600 mm triple grouser
Unit: kg



B (m)	A (Unit: m)												Max Reach	A
	3		4.5		6		7.5		8					
	Cf	Cs	Cf	Cs	Cf	Cs	Cf	Cs	Cf	Cs	Cf	Cs		
7.5	kg					*4260	*4260					*3916	*3916	6.1
6	kg					*4592	*4592					*3858	*3858	7.2
4.5	kg			*5783	*5783	*5079	*5079	*4774	4047			*3843	3717	7.9
3	kg			*7458	*7458	*5852	5414	*5109	3928	*4970	3565	*3791	3366	8.3
1.5	kg			*9033	7529	*6655	5130	*5511	3790	*5265	3463	*3935	3228	8.4
0	kg	*6062	*6062	*9906	7194	*7236	4924	*5813	3681	*5473	3382	*4467	3274	8.2
-1.5	kg	*10205	*10205	*10033	7087	*7426	4827	*5824	3638			*5446	3524	7.7
-3	kg	*13437	13407	*9457	7140	*7045	4851					*6012	4157	6.8
-4.5	kg	*10917	*10917	*7823	7364							*6316	5771	5.4

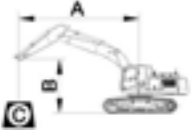
LIFTING CAPACITY (METRIC)

924FDM with 800 mm shoes, 2,915 mm arm

A: Load radius
B: Load point height
C: Lifting capacity
Cf: Rating over front
Cs: Rating over side

Conditions

Boom length: 5,710mm
Arm length: 2,915mm
Bucket: None
Counterweight: 5,000 kg
Shoes: 800 mm triple grouser
Unit: kg



B (m)	A (Unit: m)												Max Reach	A
	3		4.5		6		7.5		8					
	Cf	Cs	Cf	Cs	Cf	Cs	Cf	Cs	Cf	Cs	Cf	Cs		
7.5	kg					*4260	*4260					*3916	*3916	6.1
6	kg					*4592	*4592					*3858	*3858	7.2
4.5	kg			*5783	*5783	*5079	*5079	*4774	4183			*3843	*3843	7.9
3	kg			*7458	*7458	*5852	5593	*5109	4065	*4970	3692	*3791	3487	8.3
1.5	kg			*9033	7789	*6655	5309	*5511	3926	*5265	3589	*3935	3348	8.4
0	kg	*6062	*6062	*9906	7454	*7236	5102	*5813	3817	*5473	3508	*4467	3396	8.2
-1.5	kg	*10205	*10205	*10033	7347	*7426	5006	*5824	3775			*5446	3656	7.7
-3	kg	*13437	*13437	*9457	7400	*7045	5030					*6012	4310	6.8
-4.5	kg	*10917	*10917	*7823	7624							*6316	5975	5.4

924FDM with 700 mm shoes, 2,915 mm arm

A: Load radius
B: Load point height
C: Lifting capacity
Cf: Rating over front
Cs: Rating over side

Conditions

Boom length: 5,710mm
Arm length: 2,915mm
Bucket: None
Counterweight: 5,000 kg
Shoes: 700 mm triple grouser
Unit: kg



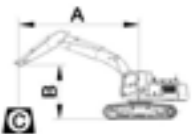
B (m)	A (Unit: m)												Max Reach	A
	3		4.5		6		7.5		8					
	Cf	Cs	Cf	Cs	Cf	Cs	Cf	Cs	Cf	Cs	Cf	Cs		
7.5	kg					*4257	*4257					*3912	*3912	6.1
6	kg					*4554	*4554					*3853	*3853	7.2
4.5	kg			*5733	*5733	*5037	*5037	*4739	4176			*3838	3838	7.9
3	kg			*7400	*7400	*5807	5583	*5072	4056	*4935	3683	*3785	3479	8.3
1.5	kg			*8973	7772	*6609	5297	*5474	3917	*5231	3580	*3928	3339	8.4
0	kg	*6059	*6059	*9847	7438	*7191	5090	*5777	3808	*5441	3500	*4458	3389	8.2
-1.5	kg	*10202	*10202	*9981	7336	*7385	4996	*5793	3768			*5436	3650	7.7
-3	kg	*13382	*13382	*9414	7397	*7010	5026					*5983	4308	6.8
-4.5	kg	*10877	*10877	*7790	7633							*6290	5982	5.4

924FDM with 900 mm shoes, 2,915 mm arm

A: Load radius
B: Load point height
C: Lifting capacity
Cf: Rating over front
Cs: Rating over side

Conditions

Boom length: 5,710mm
Arm length: 2,915mm
Bucket: None
Counterweight: 5,000 kg
Shoes: 900 mm triple grouser
Unit: kg



B (m)	A (Unit: m)												Max Reach	A
	3		4.5		6		7.5		8					
	Cf	Cs	Cf	Cs	Cf	Cs	Cf	Cs	Cf	Cs	Cf	Cs		
7.5	kg					*4260	*4260					*3916	*3916	6.1
6	kg					*4592	*4592					*3858	*3858	7.2
4.5	kg			*5783	*5783	*5079	*5079	*4774	4251			*3843	*3843	7.9
3	kg			*7458	*7458	*5852	5682	*5109	4133	*4970	3755	*3791	3547	8.3
1.5	kg			*9033	7918	*6655	5398	*5511	3994	*5265	3652	*3935	3407	8.4
0	kg	*6062	*6062	*9906	7584	*7236	5192	*5813	3885	*5473	3571	*4467	3457	8.2
-1.5	kg	*10205	*10205	*10033	7477	*7426	5095	*5824	3843			*5446	3722	7.7
-3	kg	*13437	*13437	*9457	7530	*7045	5119					*6012	4387	6.8
-4.5	kg	*10917	*10917	*7823	7754							*6316	6077	5.4



Lifting capacity at the arm end without bucket. For lifting capacity including bucket, weight of the bucket or the bucket with quick coupler must be deducted from the lifting capacities. Lifting capacities are based on the machine standing on a firm, uniform supporting surface.



Rating over - front (Cf)



Rating over - side (Cs)

- Do not attempt to lift or hold any load that is greater than these rated values at their specified load radius and height. Weight of all accessories must be deducted from the above lifting capacities.
- The rated loads are in compliance with ISO 10567 Hydraulic Excavator Lift Capacity Rating Standard. They do not exceed 87% of hydraulic lifting capacity or 75% tipping load.

- Ratings at bucket lift hook.
- Lifting capacities are based on machine standing on level, firm and uniform ground.
- *Indicates the load is limited by hydraulic capacity rather than tipping capacity.
- Operator should be fully acquainted with the Operator's and Maintenance Instructions before operating this machine and rules for the safe operation of equipment should be adhered to at all times.

Lifting capacity at the arm end without bucket. For lifting capacity including bucket, weight of the bucket or the bucket with quick coupler must be deducted from the lifting capacities. Lifting capacities are based on the machine standing on a firm, uniform supporting surface.



Rating over - front (Cf)



Rating over - side (Cs)

- Do not attempt to lift or hold any load that is greater than these rated values at their specified load radius and height. Weight of all accessories must be deducted from the above lifting capacities.
- The rated loads are in compliance with ISO 10567 Hydraulic Excavator Lift Capacity Rating Standard. They do not exceed 87% of hydraulic lifting capacity or 75% tipping load.

- Ratings at bucket lift hook.
- Lifting capacities are based on machine standing on level, firm and uniform ground.
- *Indicates the load is limited by hydraulic capacity rather than tipping capacity.
- Operator should be fully acquainted with the Operator's and Maintenance Instructions before operating this machine and rules for the safe operation of equipment should be adhered to at all times.

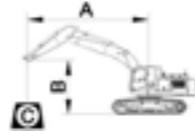
LIFTING CAPACITY (METRIC)

922FLL with 600 mm shoes, 6,250 mm arm

- A: Load radius
- B: Load point height
- C: Lifting capacity
- Cf: Rating over front
- Cs: Rating over side

Conditions

Boom length: 8,850mm
 Arm length: 6,250mm
 Bucket: None
 Counterweight: 5,000 kg
 Shoes: 600 mm triple grouser
 Unit: kg



B (m)	A (Unit: m)										Max Reach												
	3		4.5		6		7.5		8		Cf	Cs	A										
	Cf	Cs	Cf	Cs	Cf	Cs	Cf	Cs	Cf	Cs													
7.5	kg										*1884	1645	13.1										
6	kg										*1842	1460	13.7										
4.5	kg											*2634	*2634	*2536	*2536	*1842	1332	14.1					
3	kg											*5181	*5181	*3805	*3805	*3098	*3098	*2935	*2935	*1919	1250	14.3	
1.5	kg											*6576	6343	*4572	4459	*3572	3338	*3345	3058	*2102	1205	14.3	
0	kg										*2697	*2697	*6259	5638	*5197	3991	*3993	3032	*3716	2791	2151	1179	14.2
-1.5	kg										*3762	*3762	*6393	5329	*5617	3701	*4318	2812	*4012	2593	2184	1188	13.9
-3	kg										*4971	*4971	*7305	5231	*5839	3555	*4529	2678	*4210	2468	2253	1221	13.5
-4.5	kg										*6317	*6317	*7940	5254	*5885	3512	*4615	2619	*4298	2410	2415	1311	12.8

922FLL with 700 mm shoes, 6,250 mm arm

- A: Load radius
- B: Load point height
- C: Lifting capacity
- Cf: Rating over front
- Cs: Rating over side

Conditions

Boom length: 8,850mm
 Arm length: 6,250mm
 Bucket: None
 Counterweight: 5,000 kg
 Shoes: 700 mm triple grouser
 Unit: kg



B (m)	A (Unit: m)										Max Reach												
	3		4.5		6		7.5		8		Cf	Cs	A										
	Cf	Cs	Cf	Cs	Cf	Cs	Cf	Cs	Cf	Cs													
7.5	kg										*1884	1681	13.1										
6	kg										*1842	1494	13.7										
4.5	kg											*2634	*2634	*2536	*2536	*1842	1365	14.1					
3	kg											*5181	*5181	*3805	*3805	*3098	*3098	*2935	*2935	*1919	1282	14.3	
1.5	kg											*6576	6472	*4572	4548	*3572	3405	*3345	3121	*2102	1238	14.3	
0	kg										*2697	*2697	*6259	5767	*5197	4080	*3993	3100	*3716	2854	2196	1212	14.2
-1.5	kg										*3762	*3762	*6393	5458	*5617	3790	*4318	2880	*4012	2656	2231	1221	13.9
-3	kg										*4971	*4971	*7305	5361	*5839	3644	*4529	2746	*4210	2531	2301	1255	13.5
-4.5	kg										*6317	*6317	*7940	5383	*5885	3601	*4615	2687	*4298	2472	2466	1348	12.8

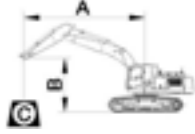
LIFTING CAPACITY (METRIC)

922FLL with 800 mm shoes, 6,250 mm arm

- A: Load radius
- B: Load point height
- C: Lifting capacity
- Cf: Rating over front
- Cs: Rating over side

Conditions

Boom length: 8,850mm
 Arm length: 6,250mm
 Bucket: None
 Counterweight: 5,000 kg
 Shoes: 800 mm triple grouser
 Unit: kg



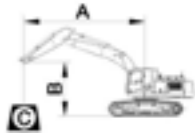
B (m)	A (Unit: m)										Max Reach												
	3		4.5		6		7.5		8		Cf	Cs	A										
	Cf	Cs	Cf	Cs	Cf	Cs	Cf	Cs	Cf	Cs													
7.5	kg										*1884	1717	13.1										
6	kg										*1842	1529	13.7										
4.5	kg											*2634	*2634	*2536	*2536	*1842	1399	14.1					
3	kg											*5181	*5181	*3805	*3805	*3098	*3098	*2935	*2935	*1919	1315	14.3	
1.5	kg											*6576	*6576	*4572	*4572	*3572	3474	*3345	3184	*2102	1271	14.3	
0	kg										*2697	*2697	*6259	5898	*5197	4170	*3993	3168	*3716	2918	*2206	1245	14.2
-1.5	kg										*3762	*3762	*6393	5589	*5617	3880	*4318	2948	*4012	2719	2278	1255	13.9
-3	kg										*4971	*4971	*7305	5491	*5839	3734	*4529	2814	*4210	2594	2350	1291	13.5
-4.5	kg										*6317	*6317	*7940	5514	*5885	3691	*4615	2755	*4298	2536	2517	1385	12.8

922FLL with 900 mm shoes, 6,250 mm arm

- A: Load radius
- B: Load point height
- C: Lifting capacity
- Cf: Rating over front
- Cs: Rating over side

Conditions

Boom length: 8,850mm
 Arm length: 6,250mm
 Bucket: None
 Counterweight: 5,000 kg
 Shoes: 900 mm triple grouser
 Unit: kg



B (m)	A (Unit: m)										Max Reach												
	3		4.5		6		7.5		8		Cf	Cs	A										
	Cf	Cs	Cf	Cs	Cf	Cs	Cf	Cs	Cf	Cs													
7.5	kg										*1884	1753	13.1										
6	kg										*1842	1563	13.7										
4.5	kg											*2634	*2634	*2536	*2536	*1842	1432	14.1					
3	kg											*5181	*5181	*3805	*3805	*3098	*3098	*2935	*2935	*1919	1348	14.3	
1.5	kg											*6576	*6576	*4572	*4572	*3572	3542	*3345	3247	*2102	1303	14.3	
0	kg										*2697	*2697	*6259	6028	*5197	4259	*3993	3236	*3716	2981	*2206	1278	14.2
-1.5	kg										*3762	*3762	*6393	5718	*5617	3969	*4318	3016	*4012	2783	*2301	1289	13.9
-3	kg										*4971	*4971	*7305	5621	*5839	3823	*4529	2882	*4210	2657	*2396	1325	13.5
-4.5	kg										*6317	*6317	*7940	5644	*5885	3780	*4615	2823	*4298	2599	*2527	1422	12.8



STANDARD EQUIPMENT

ENGINE SYSTEM

- Cummins B6.7 engine, EPA Tier 4F/EU Stage V, turbocharged, 6 cylinder, 4 stroke, water cooled.
- Engine overheat prevention system
- Auto-idle speed control
- Automatic engine shutdown
- Air filter with integrated pre-cleaner
- Metal fuel tank
- Fuel pre-filter with water separator and water detection
- Electric fuel lifting pump
- Remote engine oil filter
- Double engine oil dip-stick
- Lockable engine oil gauge
- 6 x reversible electric cooling fans
- Radiator dustproof net
- Air conditioner compressor belt automatic tensioner
- Cold starting kit for -20° C
- Electric refueling pump with auto shutoff

HYDRAULIC SYSTEM

- Full electric control hydraulic system
- 3-power modes (Power, Standard, Economy)
- Power boost function (automatic & manual)
- Pilot control shut-off lever
- Pilot accumulator
- Automatic swing parking brake
- Swing with anti-reverse function
- Boom and arm regeneration circuits
- Boom and arm holding valves
- Boom lowering device for back-up
- Automatic two-speed travel
- Automatic travel parking brake
- Hydraulic oil temperature independent control
- Pressure checking port for main pump
- Hand proportional control auxiliary dual way pipes
- Auxiliary sigle-double hydraulic lines exchange on the monitor
- Auxiliary dual pipe flow & pressure adjustable
- Control pattern-change valve

OPERATOR STATION

- Pressurized and sealed cab with all-around visibility
- ROPS certified cab
- Removeable lower windshield
- Openable front windshield
- Large roof window with slide sliding sun visor
- Air suspension deluxe seat (with heater and head rest) +retractable seat belt (75 mm [3 in] width, red colour, with warning alarm)
- Consoles and seat height adjustable follow-up 8 inches high resolution LCD touch screen + integrated control panel
- Automatic air conditioner, heater, defroster
- Washable floor mat
- Place for shoes
- Fire extinguisher
- Safety hammer for cab evacuation
- Storage box
- Cup holder
- Document holding space
- Green safety glass
- Sliding window positioning
- Cab interior lighting
- Rearview mirror installed in cab

ELECTRICAL SYSTEM

- Monitor: working mode, working hour, water temperature, oil temperature, fuel level, DEF level, fuel consumption, rear vision, fault code, work condition etc. machine information
- Warn: low engine oil pressure, low fuel level, air filter clog, machine overheat, maintenance remind etc.
- Front window wiper with intermittent feature
- Wiper intermittent time adjustable
- Bluetooth/ AM/FM radio with auxiliary input
- Work lights shut off delay timer
- Cab light shut off delay timer
- 2 stereo speakers
- 2 signaling/warning horn
- Battery disconnect switch
- Emergency stop on ground
- Set password for auxiliary hydraulic-flow adjustments
- Work tool flow and pressure programmable memories
- Overload warning device

- Travel alarm
- Rotating beacon
- 4 boom working lights
- Work lights: separately installed LED in front and rear cab (4 front and 2 rear)
- 360° view camera

UNDERCARRIAGE

- Standard track undercover
- 600mm track-shoes with triple grousers
- Rollers, bottom - 8 each side
- Rollers, top - 2 each side
- 2 piece track guards (each side)
- Centralized lubrication for swing bearing
- Towing eye on base frame
- Traction hole

UPPER STRUCTURE

- Frame handrail
- Punched metal anti-slip plates
- Foot rest access panel in engine room
- Engine chamber and main pump chamber separated by fire board
- Standard frame undercover
- Side door brace automatically lock
- One key for all locks
- Rearview mirror mounted in the RH machine
- Rearview mirror mounted in the LH cab
- 4,000kg counterweight

DIGGING EQUIPMENT

- 5,710 mm boom
- 2,915 mm arm
- Arm front end with guard bars
- Manual centralized lubrication on boom
- Manual centralized lubrication on arm

SERVICE & MAINTENANCE

- Maintenance tool kit
- Maintenance parts package
- Telematics system
- Remote program update
- Data diagnostic port
- Self-diagnostic system

OPTIONAL EQUIPMENT

HYDRAULIC SYSTEM

- Hand proportional control auxiliary swing pipes
- PTO max flow with manual control
- High pressure quick-coupler pipes
- Low pressure quick-coupler pipes
- Attachment oil drain line
- Additional filter for breaker piping
- Straight travel with one pedal
- Automatic hydraulic system warm-up
- Long-life hydraulic oil (replacement cycle 5,000h)

OPERATOR STATION

- Cab lower window guard
- Cab top guard
- Openable cab front guard
- FOPS Level II Cabin Guard (Front Screen and Roof)
- Openable cab front window mesh guard
- Transparent cab skylight
- Sunscreen
- Front window rain visor

ELECTRICAL SYSTEM

- Quicker-coupler opening warning
- Starting code
- Machine rear lighting
- 2 alarm mounted bracket on cab roof
- Capability to electrically connect beacon

UPPER STRUCTURE

- Guard rails of upper frame sides
- Guard fence of upper frame around

UNDERCARRIAGE

- 700mm, 800mm, 900mm track-shoes with triple grousers
- Additional track step
- 3 piece track guards (each side)
- Full length track guard

DIGGING EQUIPMENT

- Bucket linkage with lifting eye
- Bucket lifting hole

- 2,400mm short reach arm
- 3,500mm long reach arm
- 15m super long reach boom & arm

DEMOLITION PACK (924F DM)

- Bolt on Side Impact Protection
- Heavy Duty Belly Plates
- 5000 kg counterweight
- Bucket cylinder rod protect
- Heavy Duty Undercarriage Cover Plates
- FOPS Level II Cabin Guard (Front Screen and Roof)
- Openable cab front guard
- Boom drift function
- 924F DM Nomenclature
- Work lights: long strip LED light in front and rear cab



LG-PB-EU-922F 924F-44-102021-ENG



Guangxi LiuGong Machinery Co., Ltd.
No. 1 Liutai Road, Liuzhou, Guangxi 545007, PR China
T: +86 772 388 6124 E: overseas@liugong.com
www.liugong.com

Like and follow us:



The LiuGong series of logos herein, including but not limited to word marks, device marks, letter of alphabet marks and combination marks, as the registered trademarks of Guangxi LiuGong Group Co., Ltd. are used by Guangxi LiuGong Machinery Co., Ltd. with legal permission, and shall not be used without permission. Specifications and designs are subject to change without notice. Illustrations and pictures may include optional equipment and may not include all standard equipment. Equipment and options varies by regional availability.