



*Featured machines in photo may include additional equipment.

Engine	Cummins 6BTAA5.9-C160
Rated Power	118 kW (158 hp / 160 ps) @ 2,200 rpm
Blade Width	3,660 mm
Maximum Speed	40 km/h
Draw Bar Pull	69 kN
Operating Weight	12,300 kg

4140D MOTOR GRADER

4140D SPECIFICATIONS >>>

ENGINE

Emission Regulation	Tier 2 / Stage II
Manufacturer	Cummins
Model	6BTAA5.9-C160
Rated Power	118 kW (158 hp / 160 ps) @ 2,200 rpm
Maximum Torque	670 N·m
Number of Cylinders	6
Aspiration	Turbo & air-to-air intercooled

TRANSMISSION

Transmission Type	Countershaft, power shift
Torque Converter	Single stage, three elements
Maximum Travel Speed, fwd	40 km/h
Maximum Travel Speed, rev	26.5 km/h
Number of Speeds, fwd	6
Number of Speeds, rev	3

AXLES

Differential Type	Limited slip standard
Final Drive Type	Chain drive
Axle Oscillation	16°
Front Axle, Wheel Lean Angle	Left / right 18°

STEERING

Steering Configuration	Load sensor steering gear
Steering Relief Pressure	16.7 MPa
Minimum Turning Radius	6,900 mm
Steering Angle	±50°
Frame Articulation Angle	±27°

BRAKES

Service Brake Type	Caliper discs brake
Service Brake Location	Rear axle

TIRES

Tire Size	13.00-24
-----------	----------

HYDRAULIC SYSTEM

Main Pump Type	Gear
Main Relief Pressure	20 MPa
Main Pump Flow	122 L/min

WORKING CAPACITIES

Maximum Draw Pull	69 kN
Cutting Pressure	6,000 kg

TANDEM DRIVE PERFORMANCE

Height	600 mm
Width	210 mm
Center Distance	1,553 mm

MOLDBOARD PERFORMANCE

Bank Cut Angle	28~74°
Moldboard Lift Above Ground	520 mm
Moldboard Side Shift, left/right	580 / 590 mm
Maximum Sloping Angle	90°
Cutting Depth	600 mm
Circle Rotation	360°
Circle Diameter	1,265 mm
Circle Thickness	130 mm

DIMENSIONS

Wheelbase	5,930 mm
Overall Length	8,440 mm
Overall Height with Cab	3,350 mm
Clearance under Front Axle	577 mm
Moldboard Standard Length	3,660 mm
Moldboard Standard Thickness	19 mm
Moldboard Standard Height	550 mm

OPERATING WEIGHTS

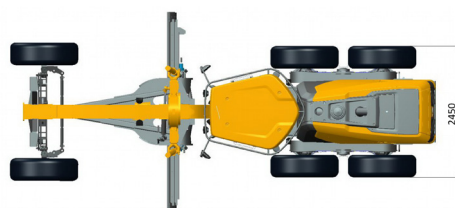
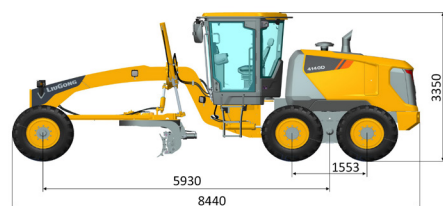
Operating Weight	12,300 kg
------------------	-----------

SERVICE CAPACITIES

Fuel Tank	348 L
Engine Oil	18 L
Cooling System	35 L
Hydraulic Reservoir	115 L
Transmission and Torque Converter	33 L
Tandems, each	36 L

OPTIONAL EQUIPMENT

- Rear Ripper
- Front Dozer
- Automatic Leveling System
- Rotary Beacon
- Frictional Flake Worm Box



Guangxi Liugong Machinery Co., Ltd.

No. 1 Liutai Road, Liuzhou, Guangxi 545007, PR China
T: +86 772 3886124 E: overseas@liugong.com
www.liugong.com

Specifications and designs are subject to change without notice. Machines shown may include optional equipment. Liugong standard and optional equipment may vary from region to region. Please consult your Liugong dealer for information specific to your area. Engine power kW is converted to horsepower (1 kW=1.3596 ps and 1 kW=1.3410 hp) in this file.

08/2022 Designed by LiuGong
Replace the previous versions of 01/2022